



# *The Valley & East Coast Voice*

*Est. 1968*

*Volume 43 No. 3. Thursday July 1, 2010.*

*50 cents*

## **AFL MASTERS CARNIVAL ST MARYS RECREATION GROUND**

**Sunday 11 JULY, 2010.**

**(following Auskick)**

**There will be two games as  
follows:**

**St Marys vs North Central  
at 12.30pm**

**Launceston vs Combined  
Side at 2.00pm**

**FULL RANGE OF FOOD  
AND REFRESHMENTS**

**More details inside...**

Congratulation to all those football stalwarts, who have come out of retirement and worked so tirelessly to reach this milestone in rejuvenating the 'Mighty Tigers Football Club'.

Having the AFL Masters play at St Marys is something for the public to be excited about if you like your footy. This is the first time in 8 years that a St Marys team has played on our home ground in the mighty Tiger's colours.

The club always needs plenty of helpers, as a club does not run on player's alone. So if you love your footy, like to socialise, and can spare a little time to help, you will be very welcome.

This game on home ground will bring back a lot of wonderful memories, to many locals who were fanatical followers, and never missed a game, home or away.

So dig out the coats and scarves, (in St Marys colours if you still have them) and turn up to watch what will be a day to remember for St Marys, especially Rick & Cookie!

Editor.

*Photos courtesy Harry Veldums.*

## **ST MARYS TIGERS FOOTBALL CLUB**

A little something about our key players:



### **Roger "Salty" Salter - Captain**

Started playing with St Marys in the Under 16's way back in 1976. Played in two premierships (1990/91) and coached the senior St Marys team in 1998. A true stalwart of the club and has played over 300 games.



### **Paul Barnes – Vice Captain**

Another stalwart of the club Paul started playing for St Marys in 1989. Played in both the 1990/91 premierships and has over 250 games for St Marys to his credit. Still extremely fit.



### **Michael "Cookie" Cooke – Playing Coach and Team Manager**

Michael started with St Marys Under 16's more years ago than he cares to remember. Has racked up over 300 games with the club and played in the Reserves premiership in 1982. Has worked tirelessly to get this team on the paddock – a true "local legend".

**Please note: Deadline for articles in the next Valley Voice is 5pm Tuesday July 13, 2010**

**EMAIL ADDRESS: [judith.spilsbury@telair.com.au](mailto:judith.spilsbury@telair.com.au)**

## Community news

**St Marys Hospital Auxiliary** meets the first Monday of every month at 2pm at the **St Marys Community Health Centre**.

**The Break O'Day Woodcraft Guild Inc.** meets for meetings the last Saturday of the month at 2pm at the goods shed behind the St Marys Railway Station.

The **Tasmanian Lymphoedema Centre Inc.**, holds meetings every 3rd Monday of the month at 10 am at the St Marys Community Health Centre, Day Care room.

**St Marys Ladies Midweek Tennis** 9.30am each wed. Need new players - of any standard-beginners welcome-childminding included - lovely safe place to bring toddlers while you play. **Ring Annette-6372 2224.**

**St Marys Playgroup** meets each Monday 10.30am - 12 noon at the **Falmouth Community Centre**, during school terms. \$2 a session per child or \$3 per family. Please bring a piece of fruit to share and your child's personal drink bottle. Bikes plus helmets welcome. **Phone or text: Danyelle: 0427 073 100.**

**WOMBAT WALK LANDSCAPING GROUP** meet every Wednesday 9am to 12 Noon (weather permitting) at St Marys Musical Playground area to plant and maintain the rivulet park and flower bank - anyone interested in joining us - please come along and meet our group. **Contact - Robina 6372 2022.**

**St Patricks Head & Esk Valley Historical Society Inc** has a meeting one month and a field trip the next. We invite everyone to come along on the third Sunday of the month and enjoy an informative time with lots of fun.

For more information Phone: Barry Aulich (637225752) Darlene Wright (63722416) or Jim Haas (63722127)

**Break O'Day Wine & Food Appreciation Society** meets once a month on the last Sunday.

**Ph: John 6376 3130.**

**The Scamander and Beaumaris Community Development Association** meets at 7 pm at the Scamander Sports Complex every third Wednesday of the month. New members are most welcome.

**The Falmouth Community centre** would like to advise members and the community that the new contact for bookings of club facilities is Ben Morgan. Ben can be contacted on **03 6372 5604.**

**Suncoast Singers** meet every Friday at 10am in the Catholic Hall - Cecilia Street St Helens. New singers always welcome.....If you can yawn - you can sing. Phone Mary-Anne Wadsworth 6376 2969.

**St. Helens Al-Anon Family Group Meeting:** St. Pauls Anglican Church Hall - every Sunday 2pm Contacts: **Ann, John 6376 3270 or Rose 6376 3335.**

**The Friends of the History Room** hold General Meetings: 8th February, 10th May, 12th July --AGM, 11th October. Executive Meetings: 9th March, 14th June, 9th August 13th September, and 8th November. All held at Tidal Waters at 5pm.

### St Marys Hospital Auxiliary.

**All members to note**

**No** meeting will be held for the month of July.

August meeting as normal.

### gone rustic studio & gallery

37 main street  
st marys 7215

0363722724

*featuring handmade &  
contemporary art &  
craft direct from  
the artist to you*

*agents for wide span  
sheds & leafstopper*

**new exhibition -**  
*from the earth by*  
aukje boonstra, a  
touring display of  
plant dyed & hand-  
stitched works from  
tas regional arts;  
finishes 14 July

**opening hours**  
tues - sat. 10 - 4

**n.b. - closed from**  
**14-24 July 2010**

[www.gonerustic.com](http://www.gonerustic.com)  
[gonerustic@yahoo.com.au](mailto:gonerustic@yahoo.com.au)

**member of greater esk tourism - g.e.t.**

### NOTICE

**ANNUAL GENERAL MEETING**  
**FOR FINGAL VALLEY MEALS ON WHEELS.**

TO BE HELD AT THE  
COMMUNITY HEALTH CENTRE  
AT 2PM ON THE 17TH AUGUST, 2010.

ALL WELCOME.  
LUNDY VOSPER, SECRETARY.

**The A.G.M. of the Friends of the History Room and Museum** will be held on July 30th 2010 at 7 pm in the Bungalow of the Neighbourhood House, Medea Esplanade, St Helens. This will be a Film, Fun and Food night. All welcome. Memberships are now due, still only \$15 !!

### Falmouth Community Centre

Annual General Meeting and Accompanying Meeting Sunday July 4th, 2010 at 4pm. All members welcome. Come along and see the new deck and verandah and have your say to help elect the committee for the 2010/2011 financial year.

### NOTICE OF ANNUAL GENERAL MEETING Greater Esk Tourism (GET)

invites members to attend the next

### *Annual General Meeting*

at 7 pm on Monday 9th August  
at Fingal Valley Neighbourhood House.

Enquiries to the president on 0363722783

## Classifieds

### For sale

**Westinghouse fridge/freezer.** 390 litre. Good Cond. \$120. **Ph: 6372 2924.**

**Truck tyres** 11.00 x 22.5 new recaps on tubeless rims (6) \$400 each.

**Truck tyres** 9.00 x 20 recaps on Inter rims, very little use (8) \$250 each.

**Ford Major tractor** with slasher and post driver. \$3,500. will separate.

**Suzuki Eager 400 4 x 4.** Good condition, bear claw tyres. \$4,5000. **Ph: 6372 2107.**

**Computer desk** with pull out keyboard shelf and stationery drawer, plus ergonomic chair. \$30.

**Laundry trough** "Everhard Nugleam Supreme", polymer cabinet with stainless tub. Brand new –unused. Over \$200 new. \$100. **Ph: 6372 2813**

**2003 Peugeot 206XR** 4 door hatch, metallic red, 111,000km, comes with warranty, new tyres/brake pads, reg. 01/11, CD player, A/C, etc. Great condition, reluctant sale \$8,800 ono. **Phone Leissa on 6372 2686 or 0458 648 927.**

New, still in boxes, **2 x 250mm electric exhaust fans.** DIY. \$13 each. 50 steel **6mtr lengths of plaster ceiling battens.** \$10 per 6mtr length. **Blue single pipeline bed.** \$10. **Kitchen-dining dresser.** New Zealand Kauri pine. 2 piece, top colour glass, bottom cupboards and drawers. \$300. 25 mtr **undercoated 50mm colonial skirting.** \$20 the lot. **Ph: 6372 5445.**

**1996 Suzuki Baleno Auto,** Nov 2010 rego exc cond goes well \$2800. ono. **1994 Magna Mitsubishi Wagon** Auto, Oct 2010 rego new tyres goes well. \$1500. ono.

**Treadmill** electric, goes well \$250. ono.

**Study Bunk Loft style bed** with desk underneath Exc cond (fantastic furniture brand)\$200. ono. **Single Bed** timber, very good cond. (fantastic furniture brand) \$80. ono EVERYTHING MUST GO MAKE AN OFFER

**Ph:6372 2914 0439 959 403 0418 778 417.**

**1 ski biscuit** in good order \$50.00

**1 BBQ 3 burner** with thermostat controlled hood and side burner complete with rotisserie. \$160.00

**Ph: 6372 2301.**

**Horse float.** Dome roof, single style, electric lights in working order. Not currently registered. \$750.ono.

**Ph: 6374 1023** for an inspection.

**1998 TF Magna automatic.** Alloy wheels, good tyres, 12 months rego. 264,000kms. In good condition. \$3,500.

**Ph: 6374 1027.**

**2 x wooden bar stools.** \$50 each. 3 x single doona covers – Ford, Holder & Harry Potter. \$25 each. **Belkin wireless router.** Brand new, never used. Cost \$129. Sell \$90.

**Ph: 6372 2438 or 0439 333 398.**

**Large square bales of straw for garden mulch.** **Ph: Mark or Alana 6372 2145.**

**Garden mulch or bedding.** Small square bales of oaten straw. \$5. **Ph: 0407 944 158.**

**Garden mulch,** in big round bales. (wheat straw, weed free) \$60 a bale, delivered free in St Marys area.

**Ph: 0407 944 158.**

### GARAGE SALE

Rotary Hoe, Drop-Saw, Compressor,  
2 Chainsaws, Block & Tackle, Boat Winch,  
Plenty of Electric and Hand Tools,  
TV, Video, 2 Stereos, Camping gear,  
Household Goods, Lounge Suite, Bar Fridge,  
Craft bits and pieces,  
Books & Magazines, Bric-a-brac  
and anything else you can find in the frost!

38 Victoria Street, Fingal  
( street opposite Forestry Workshop)  
**63 74 2247 or 0428 193 639**

### WANTED

A GOOD JOB FOR A TRUSTWORTHY  
14 YEAR OLD GIRL  
SO SHE CAN MAKE A LITTLE BIT OF  
POCKET MONEY.  
**PLEASE PHONE BREE: (03) 6372 2107.**

### WANTED TO BUY

CARAVAN IN LIVABLE CONDITION.  
UP TO \$3,000. **PH: 6384 2355**

### WANTED TO BUY

LOG ROLLER  
**PH: 0407 908 058**

### Ironing and cleaning available.

**Hourly rates.**

**Reliable and honest.**

**Ph: 0429 322 927**

**Frozen blueberries** - this season's - \$11 kilo.  
**Phone 6372 2341.**

### St Marys Market

Rain hail or shine the markets will be  
held on the 1<sup>st</sup> Saturday every month in  
the community hall 9am till 2pm.  
New stall holders welcome  
phone Colin 03 6372 2707



### Stallholders Market Inc.

Is a non profit organisation holding markets every Saturday from 8am in St Helens, at the Library car park. There is a variety of stalls and the fees charged to stall holders is donated to various charities.

For stall booking and other inquiries, please phone Sylvia on 6376 8390. Saturday mornings only: 0447 589 803.

Classifieds in the Valley Voice are free of charge. If your articles are not sold after the first entry, we will repeat the ad in the next issue. Please let us know if items are sold. Every effort will be made to have correct details and phone numbers. However if there is a mistake, it will be corrected in the following issue.

Articles for any edition may be left at the St Marys Pharmacy. This also includes items for sale and wanted. Please ensure that your details are included.

**"Moo-Poo".** Finely screened. Any quantity. See Norm.  
**Ph: 6372 2380.**



*St. Marys Tigers Football Club Inc.*

# **AFL MASTERS CARNIVAL**

## **ST MARYS RECREATION GROUND**

### **11 JULY (following Auskick)**

**St Marys vs North Central at 12.30pm**  
**Launceston vs Combined Side at 2.00pm**

### **FULL RANGE OF FOOD AND REFRESHMENTS**

Come along and throw your support behind the rejuvenated St Marys Tigers Football Club. Witness the first St Marys team to play on home soil in the mighty Tigers colours for eight years.

#### **Entry by gold coin donation**

To our faithful members – show your foundation membership card for free entry and the club will also be happy to shout you a drink and something to eat.

Volunteers needed – goal umpires, scoreboard attendant, timekeeper, gate collectors.

Also additional players (33yo and over) are welcome.

Please contact Harry at the PO (6372 2124)

**Existing & new players– training at St Marys 10.30am Sunday 4th, followed by a BBQ.**

**Dick Adams MP**

Federal Member for Lyons

Please contact one of my offices if I can be of any assistance

53B Main Road  
PO Box 50  
Perth, Tas 7300  
Ph 6398 1115

58A High Street  
PO Box 271  
New Norfolk Tas 7140  
Ph 6261 3366

Toll free 1300 132 689

Email [D.Adams.MP@aph.gov.au](mailto:D.Adams.MP@aph.gov.au)



**WORKING WITH YOU AND  
YOUR COMMUNITY FOR THE  
FUTURE**

Written and Authorised by Dick Adams, 53B Main Road Perth  
Tas. 7300

#### **Rae & Partners**

**Lawyers Barristers & Solicitors**  
**113 Cimitiere St Launceston**

#### **Visiting :**

**St Marys Community Health Centre**

**Alternate Tuesdays :** 9 am – 10 am

**Ph: 6337 5555 For appointments.**



#### **BOBCAT HIRE**

- \* Site cleaning & leveling
- \* Excavations
- \* Post hole digging
- \* Landscape preparation

**SAVE HOURS OF HARD WORK.  
GIVE MARK A CALL  
Ph: 6372 2145.**



## Letters to the Editor

Vol. 43 No 3, 2010

### To the Editor

There is a fair bit in this week's Valley Voice about the St Marys Tigers Football Club and our first "home" game for eight years. I would just like to take this opportunity to thank all involved in getting this off the ground. Firstly it was largely Rick Lohrey's passion and tenacity that initially sowed the seed to getting the Club back up and running.

Michael Cooke has worked tirelessly to assemble a team that while advancing in years, still have great skills and more importantly are playing because they love the game. Gary "Speed" Maher has also been there from the start and is a master at the BBQ. Look out for his gourmet burgers on the 11<sup>th</sup>! Quite a few others have also helped along the way and I hope they will forgive me for not mentioning them personally.

When we first met to discuss reforming the Club we focused on the desire to have a family and community based club where the players turned out because they loved their footy – not because they were chasing a dollar. We even wrote these values into the Club's new constitution.

It has been a bit of a slog and we still have a way to go but we have reached a real milestone – a St Marys team playing at St Marys in the St Marys colours. So we are up and running; we have a team and now we need the community. We really need your support not only to assist the players to perform at their best but also to prove to us that St Marys does want a football team; that our efforts are not in vain.

So come along on the 11<sup>th</sup> of July to watch St Marys play North Central commencing at approximately 12.30pm and stay around for the second game, Launceston versus a combined side at approximately 2.00pm. There will be a full range of refreshments and food available and it will only cost a gold coin donation to get into the ground.

Finally a very sincere invitation to any recent arrivals in town to come out and hopefully sample a bit of the atmosphere and community spirit this small town is renowned for.

Harry Veldums,  
Club President.

---

### Letter to the Editor

I would like to thank all who attended the meeting held in response to my survey regarding the policing of St Marys.

The meeting was very positive, with many issues and concerns being raised. The outcome looks positive as two new police officers will soon be residing in the town, and a monthly town meeting is also in the process of being organised and will be well advertised for all to attend, after the arrival of the two new police officers.

I would also sincerely like to thank all those who signed my survey.

Sharon Norton.

### Letter to the editor

A meeting was recently held with 10 community members and local police at St Marys to discuss concerns in regards to policing, crime and anti-social behaviours in the area.

Those attending are interested in establishing regular meetings with police to improve community liaison with the police, and to increase local awareness of crime and the importance of reporting crime and anti-social incidents. The first meeting will be in August with the two new police officers, who will be based at St Marys, so as to discuss issues of concern. If you are interested in this, please let me know.

Did you know that a Community Safety Committee holds meetings once a month? (usually on a Wednesday afternoon at 3:30pm). The committee formerly had members from throughout the Fingal Valley, but most no longer attend, so some increased interest from the valley area would be welcome. Community representatives can request to become members – just contact St Helens Police and they can give you further information.

On another matter, I am still receiving positive comments from members of the public in regard to the excellent work done by council staff following the May flood. It is important to receive this type of feedback, which is passed onto council staff, and they can take pride in the work they do for the community.

Councillor Hannah Rubenach, phone 0417 528 088

## REMEDIAL MASSAGE

Geoff Coasby (CSM.CRM.)

### Now in Fingal

15 years extensive experience treating professional sports people including AFL footballers, triathletes, swimmers and everyday people who are suffering from muscular problems.

Qualified Treatment for:

Low Back Pain

Shoulder Pain

Neck Pain

Tennis Elbow

Hamstring and Calf Problems

Headaches

**Call to make an appointment now  
for your assessment**

Phone: 6374 2325



www.fingalvalleyhistory.com

## MATHINNA FIELD TRIP

On Sunday the 20<sup>th</sup> June St Patricks Head & Esk Valley Historical Society Inc held another successful field trip. This time it was to Mathinna, with the focus on gold mining and its effects on the area.

Thirty odd keen history lovers converged on Mathinna at 10:30am and were met by locals Keith Guy, Christine Scott and Robert Parsons, all of whom had brought along photos and artefacts relating to the gold mining days of their town. Even a small pill bottle containing alluvial gold panned from a nearby creek was on display.

Keith gave a talk on the history of Mathinna and the gold mining that gave the town a population of over 5,000 back in the late 1800s, making it the third largest in Tasmania at that time. He went on to name a dozen or more mines in the area, but said there were hundreds worked over the years with many shafts and tunnels still visible in the hills around the town. The Chinese were also prominent in the area and their workings were distinguishable because they always built their shafts perfectly round, where the Europeans built theirs square.

After the talk Keith led the group to the Golden Gate mine, which was by far the largest of the gold mines and had the longest life. From 1888 to its closure in 1932 the mine produced some 7 tonnes of gold. This, however, fell well short of the Tasmanian Gold Mine at Beaconsfield which produced around 30 tonnes in that period.

Most of the mining in the Mathinna area was reef mining where the gold was found in reefs, or pockets of quarts. The quarts were brought to the surface where it was put through a sophisticated processing system to extract the gold and the waste quarts dumped. But it is said that the old method of extraction did not get all the gold. This has led several companies, including Riltec of Melbourne and a Russian company, trying more modern extraction equipment in recent years. But it appears the old hands knew their stuff and did not leave too much gold because none of the modern methods have been all that successful.

The highlight of the day, especially for the young ones, was a trip down an old gold mine tunnel. The tunnel would have to be over a hundred years old, but still in perfect condition and gave a perfect example of how hard the early miners had to work to win their ounce of gold.

After the tunnel experience it was back to the recreation ground for a picnic lunch, which everyone was able to enjoy in beautiful, bright, winter sunshine.

The day finished with some heading off to the cemetery where names like Polley and Reece were just a couple of well known Tasmanian names engraved on the old headstones. A few other more enterprising members of the group went off into the hills with metal detectors. A bottle top, however, seems to be the best find of the day.

Many locals say the "Mother Load" is still under Mathinna just waiting to be found. If this is true Mathinna just may get a new lease of life in the future. But then, why would you want to interfere with the tranquillity that this quaint little town enjoys today?

Jim Haas.

*More photos next page....*



*All field trip photos courtesy Peter Troode.*

**Valleys of Adventure**

AVOCA • ROYAL GEORGE • ROSSARDEN • FINGAL • MANGANA • MATHINNA • UPPER ESK • CORNWALL • ST MARYS

GREATER ESK TOURISM

**"Do you have an idea for a business but have no money and no idea how to go about it?"**

**"Have you ever wanted to work for yourself?"**

Information night (with NEIS scheme info)

**7pm Monday 12<sup>th</sup> July**

**Fingal Neighbourhood House**

Training course and funding available for 12 mths to help set up small business.

**Come along and find out more.**

**An initiative of G.E.T. - Greater Esk Tourism**

For more details, please contact the president on 6372 2783









*All Solstice photos courtesy  
Peter Troode, Janet Drummond &  
Leissa Dane.*

## Winter Solstice 2010

St Marys came alive to the sound of fiddles leading the lantern parade when the annual Winter Solstice celebration began on the evening of Saturday 19<sup>th</sup> June. The lanterns wound their way to Faulkner's Green where John McColl's beautiful fire sculptures were lit, then led everyone back to the St Marys Hall where a warming dinner of curries, soups & filled jacket potatoes was served to over 120 people. After dinner and a drink or two (the mulled wine was a sell-out!) the Tasmanian Heritage Fiddle Ensemble, with caller extraordinaire Dave, got young & old to their feet for almost 3 hours of dancing with only a short break to enjoy a delicious supper & give away some fantastic lucky door prizes.

The night wouldn't have been possible without the hard work of many people who volunteered their services to - do the posters & advertising, decorate the hall, cook & serve the food & drinks, billet members of the fiddle band, clean up that night & the next day and so much more. Thank you all.

And thank you to all our supporters - Kevin Faulkner, Grant Faulkner, the Break O'Day Council, St Marys Pub, St Marys Post Office, Hannah Rubenach, Strawberry Jelly, Mt Elephant Fudge, Pelican Sands Resort, St Marys Bakery, Lion's Club of St Marys, the local emergency services, John McColl, the Valley Voice, St Marys Supermarket, Second Hand Rose, - I hope I haven't left anyone out!

And especially thank you to all the people of St Marys and the surrounding district for coming along and participating in the evening to make it a huge success!

*More photos* →



## **Sweet news for sugar lovers from Purple Possum.**

We don't do things by halves at Purple Possum. That's why folk with a sweet tooth will discover not one, not two, but seven different kinds of sugar in our Wholefoods section. Pop in for organic sugar - white sugar - raw sugar - brown sugar - dark brown sugar - castor sugar - or icing sugar. And you can buy exactly the quantity you require, large or small!

**Special offer on Avalon Organic  
Shampoo and Conditioner - buy one, get  
one free - until 15 July!**

**Purple Possum**  
Wholefoods & Café

Just who was that embarrassed lady spotted at Beaumaris a couple of weeks ago, having run out of petrol?

You wonder why I mention this?

**She happens to sell petrol, amongst other things, for a living!!**



If you live in Fingal, keep on the lookout for a runaway prized rooster, last seen heading to greener pastures. Owner is devastated but the rooster is probably happy!!



St Marys Police Phone Number **63721010**  
Non Urgent Number **131444**  
Urgent and Life threatening **000**





# Out & about at the Winter Solstice





## Break O'Day Council urges community groups to apply for a Broadband for Seniors Kiosk



Break O'Day Council is urging local organisations that support seniors to apply for a free 'Broadband for Seniors Kiosk' to help older people get connected online.

Mayor Legge said the Australian Government had committed \$15 million for the provision of 2000 internet kiosks to organizations that supported seniors and who sought to host a kiosk in their venue.

"Community groups, such as seniors clubs, libraries, neighbourhood centres and aged care facilities can apply for a Broadband for Seniors Kiosk. The aim of the project is to help older people gain confidence using computer technology, and to build community participation and social inclusion amongst older Australians," Mayor Legge said.

Successful applicants receive two desktop computers, internet access, two computer desks, three computer chairs, training materials and support from NEC Australia and its consortium partners Adult Learning Australia, Australian Seniors Computer Clubs Association and the University of the Third Age Online. The supply of the computers and internet connectivity is free and after June 30 next year, the computers become the property of the hosting community organisation.

Information on seniors' activities, email, nursing homes and retirement villages, libraries, sporting and social clubs, as well as a host of other useful information to improve quality of life for older Australians, is able to be accessed via the kiosks.

According to the World Internet Project 2008 report, 70 per cent of Australians aged over 64 don't use the internet.

"Many older people are missing out on a plethora of resources and opportunities to communicate and connect to communities online – something that has been shown to enrich lives," Mayor Legge said.

"I believe the Australian Government's Broadband for Seniors Initiative will help alleviate seniors' feelings of social isolation and being 'left behind' in a technological age. I encourage local groups that serve older people to get behind the project and support their local citizens."

For more information or to apply for a Broadband for Seniors Kiosk visit [necseniors.net.au](http://necseniors.net.au) or contact NEC Australia on 1300 795 897.



## East Coast tourism marketing group plans busy year

The centrepiece of the biggest tourism marketing initiative for the East Coast and Flinders Island has commenced distribution in key mainland markets.

The glossy, 30-page magazine-style *East Coast and Flinders Island Holiday Planner* is the driving force behind the East Coast Zone Marketing Strategy and will inform and inspire interstate visitors to choose the East Coast as their next holiday destination.

The new Holiday Planner is the second edition to be published by the East Coast Zone Marketing Group in collaboration with Tourism Tasmania. Now in its second year, the East Coast Zone Marketing Group is a volunteer committee of experienced East Coast tourism operators, formed in 2008 upon the introduction of the Zone Marketing Strategy by Tourism Tasmania.

The East Coast Zone includes all of Flinders Island and Tasmania's East Coast from Great Musselroe Bay down to Orford and inland to Fingal and Buckland.

Chair of the East Coast Zone Marketing Group, Christine Dewar, said in the first year the group focused its marketing activities on attracting potential visitors in Melbourne and Sydney, where research had shown people liked Tasmania and wanted to visit.

"What we did was develop and implement a carefully targeted media campaign to give these potential visitors a reason to book an East Coast holiday now," Mrs Dewar said.

"Thanks to the forward thinking and enthusiasm of tourism operators from Flinders Island and our East Coast who participated in the inaugural zone marketing campaign, we were able to tap into Tourism Tasmania's significant national advertising and marketing campaigns.

"Through these campaigns and our partnerships with Tourism Tasmania, NRMA and national retailer Paddy Pallin, our region received millions of dollars worth of publicity and promotion," she said.

Mrs Dewar said that over the course of the last year 30,000 hard copies of the *East Coast and Flinders Island Holiday Planner* made it into the hands of potential holiday makers.

"In addition to those hard copies more than 13,000 East Coast Planners were viewed or downloaded from [discovertasmania.com](http://discovertasmania.com) and, using interactive page-turning technology, online readers could view and zoom in on the editorial, photos and advertisements and click straight through to operators' websites".

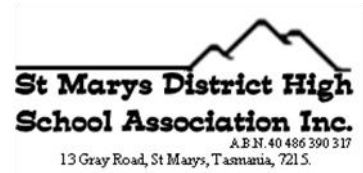
The latest 2010 Holiday Planner has even more digital features allowing online readers to share the planner through their social network pages, podcast, download and view multimedia advertisements.

Mrs Dewar says the East Coast and Flinders Island tourism communities have strongly supported the latest holiday planner enabling the Zone Marketing Group to effectively market the region.

"Our zone group has just finalised its marketing activity plan for the next 12 months and we believe that advertisers will get marvellous value from our strategic campaigns, which will bring benefits to the whole region.

"We were very happy with the way our first year went but we are looking to really getting some solid traction in the interstate markets over the next 12 months," Mrs Dewar said.





### **Fingal Primary/St Marys District High School Association News** **It's Time for a Change**

During 2011 the federation between Fingal Primary and St Marys District High School will be formalised. Members of both schools' communities have been working hard to ensure there is a smooth transition, with maximum benefits for student learning outcomes. Staff and students already have participated in a range of joint activities at both campuses.

We now enter the next phase in the formal development of the Federation. Both schools have a long, proud history of educating students from across the Fingal Valley, St Marys and east coast communities, ranging from Bicheno to St Helens. We would like to acknowledge the achievements of all former staff and students associated with the success of both schools.

Given both schools will operate under a single school association, combined budget and staffing allocation it is now time to look for a new, integrated identity. During the coming years this will allow representation of both campuses under a united banner. As part of the federation process a new corporate identity is needed – a new name and logo that will encapsulate the history and uniqueness of both schools. The new corporate name and logo will be used in all future correspondence, stationery and ultimately in uniform design.

We are calling on all students, past and present, family and community members to offer up their ideas and suggestions as to what our new identity might be. You may have knowledge of local history, graphic design or geographical place names or just be an interested observer.

Please contact any member of either school association committee if you would like further input to this process – all ideas are welcome.

**On the following page is an entry form for both competitions to allow you to contribute your suggestions. All entries must be received at either school office by 30 July 2010 marked attention School Association President.**

All entries will be considered, but no guarantees can be made for the final selection of your suggestions. Members of both St Marys and Fingal School Associations will hold a meeting to select the final name and logo.

Prizes will be awarded for each successful contribution.

Gary Barnes  
President  
Fingal Association

Tanya Greenwood  
President  
St Marys Association



#### **LOVE TASTY TENDER BEEF?**

THEN YOU NEED TO FILL YOUR FREEZER WITH  
PREMIUM QUALITY BEEF  
FROM THE LUSH GREEN PASTURES  
OF THE PYENGANA VALLEY.

BEEF 1/4 BEAST PACKS AVAILABLE.  
35-40KG BEEF @ \$10.00/KG  
INCLUDES ALL CUTS OF BEEF  
PACKED & LABELED READY TO FREEZE

"IT IS THE BEST I HAVE EVER TASTED."- GARY C.  
"THE FLAVOUR IS GREAT AND MEAT VERY TENDER" — DALE F.

ALSO AVAILABLE WHOLE LAMBS @ \$9.00/KG

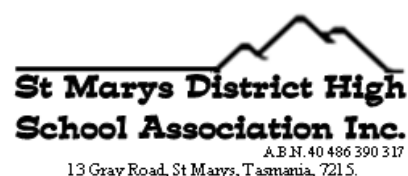
BUY LOCAL PRODUCE

ORDER TODAY PH TARA 63 736145

or email: [taranick@activ8.net.au](mailto:taranick@activ8.net.au)

**St Marys District High School Association News**

**It's time for a change!**



**Entry form New School logo competition**

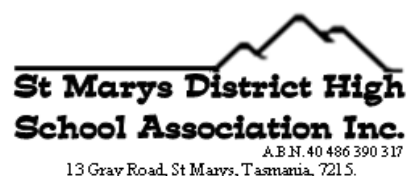
**Name:** \_\_\_\_\_

**Address:** \_\_\_\_\_

**contact tel:** \_\_\_\_\_

**St Marys District High School Association News**

**It's time for a change!**



**Entry form new school name competition**

**proposed school name:** \_\_\_\_\_

**name:** \_\_\_\_\_

**address:** \_\_\_\_\_

**contact tel:** \_\_\_\_\_



**Strawberry Jelly**

**EFTPOS — LAYBY**

42 Main St. St Marys Ph: 6372 2684

- **GIFTS GALORE**
- **BOOK EXCHANGE**
- **CARDS FROM \$1**



**LARGEST RANGE OF INCENSE  
ON THE EAST COAST**

**DVD HIRE:  
\$3 A WEEK**

**OPENING HOURS**  
MON—FRI 10AM—4PM—SAT 10AM—1PM



*Photo: Wendy Fowler, one of our clever female members.*

**EAST COAST SURVEYING**  
Consulting surveyors and land planners.  
**Mark Anderson 6376 1972**

**We can help you.**

- ☐ Buying a property?
- ☐ Planning a development?
- ☐ Unsure of your property potential
- ☐ In dispute with an adjoining owner?



**OUT OF THE WOODWORK**

**Wendy Brennan**  
**Secretary**  
**0408656014**

I would like to take this opportunity to reiterate that the club is opened to both men **and women**. It has been intimated to me on several occasions that the Woodcraft Guild is a men's shed and therefore, for men only.

Men's Shed Australia was a Federal Government initiative brought about by a lobbyist who saw gaps in our communities when it came to looking after the needs of some of the isolated male population. Their whole focus was to bring back some equilibrium and provide a preventative health measure by allocating support to this identified area of need.

The Woodcraft Guild endorses this worthwhile cause. However, our aim is for people of all ages to have a centralised meeting place where they have an opportunity to socialise with each other, engage in structured activities, share and increase skills and knowledge, and gain access to relevant services and information available to them within the community. It is both a community building project and a project that focuses on a holistic approach to the health and well being of men and **women**. I hope that this highlights the main points of the club's ideology.

A gentle reminder that membership fees are now due.

The Guild will be holding an **induction** for new members on the 3<sup>rd</sup> July at 2pm.

**Handy Woodworking Tip**

**When money is a bit tight.... Instead of using expensive saw blade cleaner, soak blade in very hot water with two tablespoons of bi-card soda. Leave for half hour, then clean with old tooth brush.**

The Guild meets on the last Saturday of the month at the Old Railway Goods Shed at **2.00 pm**. The Guild is open Monday, Wednesday, Friday and Saturday. Any other times by appointment.

**Ransley's Appliance Service**

**P O Box 136**  
**Scamander Tas 7215**

- ° Washing machine **NOISY?**
- ° Refrigerator runs too **LONG?**
- ° Clothes dryer blows cold **AIR?**

**Then you need the service  
of our technicians.**

**Ring us on: Scamander: 6372 5307**



**Grassy Bottom Regional Arts – AGM**

**This Wednesday 7<sup>th</sup> July 2010  
at 5.30pm**

**in the supper room of St Marys Town Hall.  
(to be followed by a brief general meeting).**

All positions will be declared vacant – if you are keen to continue the good work of GBRA please come along and consider becoming involved. If you can't attend the meeting but would like to be on the committee as either a position holder or general member please contact Leissa Dane on 6372 2686 or [pl\\_elemental@hotmail.com](mailto:pl_elemental@hotmail.com) as soon as possible.



# Concert - 2 choirs from Melbourne as seen on "Battle of the Choirs" Harambee & Suara A Cappella choirs



St Marys Town Hall  
Monday 5<sup>th</sup> July 2010 at 6.30pm  
entry by gold coin donation

come into the warmth and enjoy two choirs of vibrant young singers!

Harambee is an a cappella choir from Melbourne, and was founded in 2002 by a group of friends studying music teaching together at university. The name "Harambee" means "in the spirit of togetherness" in Swahili.

Suara is a group of singers all between 16 and 21 years old. Formed in 2008 by their director, Sarah Patterson, the group sings a variety of contemporary a cappella music from all over the world.

All the singers in Harambee & Suara are excited about their 2010 Tasmanian tour, which includes concerts in St Marys, Swansea and Hobart, as part of the Festival of Voices.

This is Suara's first ever tour, and everyone is looking forward to the musical rewards and the strong friendships that are bound to come from the experience.



**ST MARYS BAKERY**

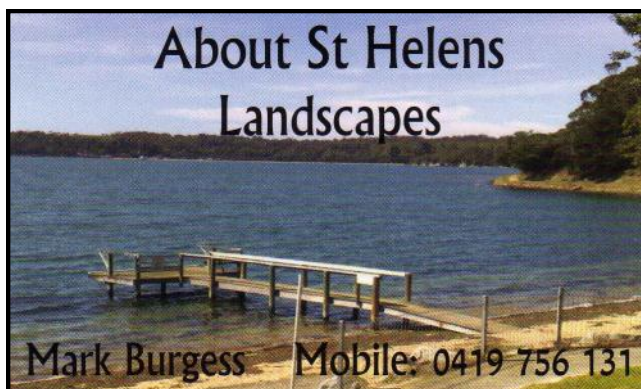
**PH: 6372 2131**

**OPEN 7 DAYS A WEEK**

**FRESH BREAD, ROLLS & BUNS,  
PIES, PASTIES, CAKES, HOT FOOD,  
COFFEE, COLD DRINKS,  
ICE CREAM.**

**52 MAIN ST ST MARYS.**





## **A.S.H. Landscaping**

**Offering a full Landscape - Consultation -  
Construction & Detail Service**

BRICK EDGING	PAVING
GARDEN BEDS	STONWORK
RETAINING WALLS	MULCHING
ROCK & WATER FEATURES	LAWNS
MAIL BOXES	PLANTING
PRE MARKET YARD / GROUND SERVICE	
TREES SHRUBS HEDGE PRUNING	
LAWN MOWING GROUNDS MAINTENANCE (NO JOB TOO SMALL)	
FULLY INSURED A.B.N. 56037049163	

**MARK BURGESS Ph: 0419 756 131 / 6372 5556**

# ERIC HUTCHINSON

for **LYONS**

To contact me:  
 Phone: **0447 777 251**  
 Email: [eric.hutchinson@tas.liberal.org.au](mailto:eric.hutchinson@tas.liberal.org.au)  
 Post: **PO Box 83, Evandale, TAS 7212**



**REAL ACTION TO GET THINGS DONE**

Authorised by the Electoral Commission, Local Government Division

**SHOP LOCALLY AND SAVE.**

### **AN APPEAL FOR MORE DRIVERS FOR FINGAL VALLEY MEALS ON WHEELS.**

**Are you interested in volunteer work, helping in the community?**

**Just an hour of your time once a month is the average for this work. It is so rewarding.**

**Your visit is looked forward to by our recipients, a little small talk does make a difference to an isolated life.**

**Fingal is difficult to roster with so many unable to manage work on Mondays.**

**Think about it please.**

**Lundy Vosper Secretary.**

**Ph: 0488 384 344 or 0409 098 060.**

### **Scamander Beach Surf Shop**

**6 Lagoon Esplanade  
Scamander**

**Ph: 6372 5529**

**Scamandersurf.com**

**Bathers Wetsuits DVDs  
Clothing Footwear  
Bodyboards  
Watches Jewellery**

**Surfboards:**

**Milch McTavish  
Surftech Bic G Boards**

### **Bay Surf Shop**

**2 Pendrigh Place  
St Helens**

**Ph: 6376 1755**



### Winter Closure

**White Sands Estate Accommodation and Restaurant will be closed from the 28th of June until the 3rd of September 2010.**

During this time we will still be accepting reservations during business hours by calling 63 72 2228.

Or simply book through our website.

Ironhouse Brewery orders can still be placed during this time by calling Michael on 0409 308 824, unfortunately we will be closed for tastings and sales at the resort.

### New beginnings

When we reopen on Friday the 3rd of September we will finally be operating out of our new building with Ironhouse Brewery as the centerpiece.

*The BrewHaus Cafe* will be open from breakfast until late and *la Blanc* fine dining will be open for dinner.

*The Providore* will be open everyday and will showcase some of Tasmania's finest produce.

*The Conference Centre* can cater for groups up to 200 people, our Saturday nights are filling up fast so if you are planning your wedding or event contact Alesha Webb our function coordinator on: 03) 6372 2228.

## St Marys Child Care Centre (Gardiners Creek Road, St Marys)

Come and visit our centre, speak to our dedicated staff about your child care needs.



We provide quality care and have a great program that focuses on all learning areas for children aged 1 to 12 yrs.

**from Monday - Friday,  
8.00am - 4.30pm**

**We still have vacancies**

contact our centre on

**6372 2187**

or email

**stmarys@ncn.org.au** for  
more information

Proudly Supported By



**More than Child Care** (\*\*Government benefits are available to eligible families)

### East Coast Phone & Communications

- \* Telephone & Data cabling
- \* Commander Systems
- \* Sound System cabling
- \* TV Antenna & Tuning
- \* Digital Set Top Boxes, supplied

& installed where reception available.

**PO Box 29,  
St Marys 7215  
Ph: 6372 2402**



**John Heron**  
30 years  
experience  
ACA Licence

### The Say Cagerattler

It's getting pretty close to rates time again and it is likely that some form of increase will apply no doubt. That's okay so long as it's not ridiculous and we see some further improvements to general infrastructure around the place. With budgets being tight though, I feel that infrastructure will be modest.

The one thing that really changed last year though was the water/sewerage delivery charges. For me this is the only real concern when it comes to public utilities. I'm still to be convinced that we are any better off at all under the new schemes. I'd love to hear from you fellow ratepayers on this subject, particularly in regard to payment methods and billing. Personally I don't like how it's done and am going to seek from Ben Lomond Water whether it is possible to pay direct monthly debit rather than this quarterly way that is the go now. It is also certain that a further rise in fees will be the case according to my memory. I think it was said that around a 10% rise each year for the first three years was to be implemented. If that indeed is the case, then let's hope we see some really worthwhile improvements to water/sewerage delivery soon.

Remember a while back when I mentioned the matter of illegal dumping of rubbish in our bushland? Well they're still at it I'm afraid. Very recently at one of the most unlikely spots on an incredible part of Mt. Nicholas, I found a place that was just loaded up with all sorts of household discarded items (including furniture would you believe). To get it there would not have been easy, given the narrow and fairly treacherous track involved. If we had some much more sensible tip arrangements I wonder if people like these discarders would go to so much trouble. It really makes me angry to see this stuff going on.

Thanks to some of the people who personally commented to me about the last issue main subject matter. Some agreed, some not so much so. That's okay but at least you are thinking about the 'crime wave'.

In regard to policing, since that article a similar offence occurred at a local facility and I believe due to some good work all round charges have been laid. I hope this teaches a valuable lesson and it's not too late for those young ones involved. Finally, by chance I had a few minutes to call into an incredible little business at Avoca the other day and if you like all sorts of knick knacks for gifts, like our own place St Marys Strawberry Jelly, then Billy Bag's is worth a look on your way to or from Launceston. This business and of course Strawberry Jelly are fun places to spend some time and maybe a few dollars too.

What do you think ?





# July Calendar

Monday	Tuesday	Wednesday	Thursday	Friday	Saturday	Sunday
			1 <sup>st</sup>	2 <sup>nd</sup> Play & Learn PYENGANA Community Hall	3 <sup>rd</sup>	4 <sup>th</sup>
5 <sup>th</sup>	6 <sup>th</sup> Play & Learn ST MARY'S Town Hall	7 <sup>th</sup>	8 <sup>th</sup>	9 <sup>th</sup>	10 <sup>th</sup>	11 <sup>th</sup>
12 <sup>th</sup>	13 <sup>th</sup>	14 <sup>th</sup> Play & Learn FINGAL Masonic Lodge	15 <sup>th</sup>	16 <sup>th</sup> Play & Learn PYENGANA Community Hall	17 <sup>th</sup>	18 <sup>th</sup>
19 <sup>th</sup>	20 <sup>th</sup> Play & Learn ST MARY'S Town Hall	21 <sup>st</sup>	22 <sup>nd</sup>	23 <sup>rd</sup>	24 <sup>th</sup>	25 <sup>th</sup>
26 <sup>th</sup>	27 <sup>th</sup>	28 <sup>th</sup> Play & Learn FINGAL Masonic Lodge	29 <sup>th</sup>	30 <sup>th</sup> Play & Learn PYENGANA Community Hall	31 <sup>st</sup>	

For more information and to share ideas/suggestions

Please call Kandi or Rachel at the Healthy House on 63765242

or email [Rachel.Woods@healthyhouse.org.au](mailto:Rachel.Woods@healthyhouse.org.au) or [Kandi.Thorpe@healthyhouse.org.au](mailto:Kandi.Thorpe@healthyhouse.org.au)

All Building Blocks sessions are free of charge.

All sessions are

from:

10.30 – 12.30

Why does someone believe you when you say there are four billion stars, but check when you say the paint is wet?



**Painting**  
**FREE QUOTES**

**East Coast & Fingal Valley**



**MICK: 0439 722 718**



We will be offering a local and friendly service at

	St Marys	St Helens
July	15th	16th
August	5th	6th

St Marys Community Health Centre  
& St Helens Hospital

If you want a professional consultation with one of our qualified optometrists then

contact us on

**6343 6333**

All consultations

are bulk billed to Medicare.

**St Marys Pharmacy**

• For all your health  
• and  
• wellbeing products

**Pharmacist on duty 5 days a week**

**Main Street, St Marys Tas. 7215**

Call in and talk to us  
about  
any health problems.  
Or discuss  
your medications.  
Our friendly staff  
are only too willing  
to help.  
with any problem.

**Phone: 6372 2844 — Fax: 6372 2874**

**ST MARYS NEWSAGENCY**

**Phone: 6372 2143**

**Open 7 days a week for your convenience.  
6am – 7pm Mon. to Fri. 7am – 6pm Sat. & Sun.**

**CALOWS BUS DEPOT**

**AURORA PAYG**

**DVD HIRE**

### **BUS TIME TABLE**

EARLY SCHOOL BUS LEAVES....	7.05AM
NORMAL BUS LEAVES....	9.05AM
EARLY BUS RETURNS....	2.00PM
NORMAL BUS RETURNS....	5.45PM
	(FRIDAY 6.45PM)
NO BUS SATURDAY	
SUNDAY BUS LEAVES....	4.30PM

**Tues - Adults Mosaic group 4.30 - 6pm**  
\$20 Tuition & basic materials supplied  
\$12 Basic materials supplied  
\$5 Byo Project (can be anything arty)

**Tues & Weds Afternoons**  
**Guitar, bass or drums** with Sim \$15 - 20 mins

**Weds 1 - 2.30 - Sculpture** (clay Modelling and  
Cement garden art) with John McColl \$20

1st **Wed** of every month 5 - 6.30  
**Life Drawing** (Model and materials provided.  
No tuition) \$12 No bookings required

Big Shed has a recording studio & **audio engineer** available Thurs, Frid & Sat for solo/  
Band recordings, radio ads, tape & records  
to CD, PA Hire etc.

Book now for an **Art Party** - \$10 per person  
for 1.5hrs of arty fun.

Big Shed has art space for hire, wall space  
that require local contemporary artwork,  
artists available for commissioned artworks  
and graphics, as well as art & craft for sale.

24837 Tasman Highway, St Helens.

Phone **0428725228**

**Bigshedstudios@bigpond.com**

New  
Opening  
Hours

Mon  
11-4  
Tues  
Wed  
11-6

**BIG SHED STUDIOS**

**CALTEX ST MARYS**  
**MECHANICAL REPAIRS & SERVICE**

**PH 6372 2335**

**41 Main St. St Marys Tas 7215**

**Fax: 6372 2822**

**Mob: 0419 503 109**

## **Grassy Bottom Regional Arts - Upcoming Events**

**Monday 5th July -** Concert with Harambee & Suara A Cappella choirs from Melbourne, as part of Festival of the Voices.

**Coming exhibitions -** "Coast to Crag" in June and "From the Earth" in July.  
Keep watching for further information.

**Wednesday 7th July -** AGM at 5.30pm in the supper room at the back of the hall.

Are you passionate about the arts? Are you interested in helping to bring events to St Marys & the surrounding district, showcasing local & interstate talent in music, drama & art? GBRA is seeking motivated & enthusiastic community members to help present workshops, concerts & other events in the Break O'Day municipality. All positions on the committee will be declared vacant and nominations will be called - for members etc. Please consider how you can help. All helping hands welcome, we need you to continue the good work of GBRA for our community.





## SPECIAL COUNCIL MEETING HELD ON MONDAY 28 JUNE 2010

The following information is provided as a brief of matters that were discussed and decisions that were made at the Special Council Meeting held on Monday 28 June 2010 at 10.00am at the St Helens Council Chamber.

The Special Council Meeting was called to adopt the Rates Resolution, Fees and Charges and the Budget Estimates for 2010/2011.

Council approved all of the items listed above unanimously.

Council's accounting system has undergone some rigorous restructuring in order to develop an accurate depiction of Council's financial position. This process has revealed that Council is currently working at a substantial deficit. Council's aim is to reduce a percentage of this deficit by gradually increasing the rates and charges over the next five (5) to ten (10) year period.

Provided below is an overview of the proposed changes to the rates resolution for the 2010/2011 financial year:

### General Rate

The budget for 2010/2011 estimates a general rate revenue of \$4.8 million. This revenue is representative of a 5% increase in the rate in the dollar in the AAV, as well as an increase in the minimum general rate by \$50.00 to \$400.00. The varied minimum general rate of \$75.00 for the jetties, boat sheds, boat ramps or slipways has not been altered.

### Waste Management

There have been no changes made to the standard garbage charge or the garbage collection charge for the 2010/2011 financial year, as the Council aims for the income charged for these services to cover the cost of the services provided ie. the services are cost neutral.

### Fire Levy

Contributions required of Council to the State Fire Commission have increased by 1% in urban areas and 3% in rural areas. The State Fire Commission has also increased the minimum rate for the fire levy from \$33.00 to \$34.00.

### Penalty & Interest

The interest percentage maximums are set by legislation, under S128 of the *Local Government Act 1993*. The maximum percentage that can be charged for 2010/2011 is 11.43%, which is an increase of 10% from last financial year. Council has not made any changes to the current penalty rate, which is an immediate charge of 6% of the unpaid instalment amount.

### Discount

The discount percentage provided to ratepayers for paying their rates in full will continue at 3%. The payment dates have been amended so that the due dates for the first rates instalment and the discount for paying in full are on the same day, with the aim to minimise the confusion caused to ratepayers and encourage more ratepayers to utilise the pay in full option.

A full set of Council's minutes are available on the Council Website at [www.bodc.tas.gov.au](http://www.bodc.tas.gov.au) alternatively, hard copies are available at the St Marys and St Helens Libraries and the St Helens History Room. Copies can also be requested free of charge by contacting Council's Executive Officer on 6376 7900.

Des Jennings  
General Manager

## Yanni's

Café / Laundromat / Catering



25 Quail St, St Helens, Tasmania. 7216.  
Ph: (03) 6376 2629  
Mob: 0400 054 110  
email: [marycporter@bigpond.com](mailto:marycporter@bigpond.com)



The

# Big takeaway

Great coffee

Fresh fish & chips

Hamburgers, Chickenburgers etc.

St Helens  
Tasmania 7216

Ph: (03)6376 2613



# ST MARY'S MARKETS

Tasmanian Regional



SAT 3<sup>rd</sup> JULY 9 am until 2 pm

RAIN, HAIL or SHINE in the community hall

Kerry Tylor will be entertaining us,

Kathy's Kitchen will be serving

Devonshire teas and a savoury surprise.

The Woodcraft Guild's popular sausage sizzle.

Over twenty stall holders with items ranging from cakes and biscuits, handmade crafts, trash and treasure, plants, CDs, DVDs

home grown vegies, homemade soy candles

herbal creams, gifts made by local artists, silk scarves,

new and second hand books, quality clothing, jewelry,

plus a huge variety of new and secondhand items.

Orders taken for pet portraits by a very talented local artist.

Come and discover your family name origins.

Come and enjoy the music and food, meet up with friends and family while you have a wander around the stalls, or join a great community market and have a stall yourself. community groups get free space.

For more information phone Colin on 6372 2707



**St. Helens Electrical**

ROD SHAW

LIC: C00489

Domestic, Commercial, Industrial:

*Wiring and Repairs, Rewires,*

*Underground.*

Home Heating:

*Advisory, Sales & Installation of heat  
pumps and fixed heaters.*

Lighting Specialist :

*Interior and exterior, Advise,*

*Sales and Installation.*

Ph: 6372-5522 Mbl: 0407-615-072

2 Lagoon Esplanade, Scamander 7215

## The Valley & East Coast Voice Guidelines.

- *Opinions in letters published are not necessarily the views held by the editor and voluntary workers.*
- *Our pages will remain open to fair and honest criticism, so that on all questions, both sides may be presented, but any letters containing personal attacks or hinting at libel or slander will not be accepted.*
- *Please do not attack the editor, the paper or the authors of previous letters.*
- *Letter writers will be given the chance to respond over a suitable period of time, but anonymous and/or nom-de-plume letters received as from 11-02-10 will not be published. Subjects may be closed at the editor's discretion.*
- *Please make sure of your facts. Do not write letters just to let off steam. Keep letters short and simple. Letters restricted to 300 words or less will be given preference.*
- *All letters arriving by post must be signed, including a printed name and also contain your contact details, such as full name, address and phone number.*
- *All letters sent by email must contain your contact details, such as full name, address and phone number.*
- *All letters left at drop-off points must have a signature, plus a printed name and also contain your contact details, such as full name, address and phone number.*

# C & D EXCAVATIONS

FOR ALL YOUR EARTHMOVING REQUIREMENTS

Phone : 03 6372 2033

Mobile : 0439 722 032



**LOCAL OWNER - OPERATOR  
OVER 20 YEARS EXPERIENCE**

**Ph : Dana or Craig**

**6372 2033 /0439 722 032**

## Incorporating all your needs in:

DAMS, ROADING, FIREBREAKS, LAND CLEARING, HOUSE SITES, DRAINAGE, BRIDGE CONSTRUCTION.

- ◆ ROAD GRAVELS
- ◆ TOP SOIL
- ◆ SCREENED TOP SOIL
- ◆ SAND
- ◆ ROCKS
- ◆ ON SITE SCREENER 20mm to 75mm (TURN YOUR RUBBISH INTO TOP SOIL)
- ◆ 20 TONNE EXCAVATORS WITH TILT BUCKET & RIPPER, ROCK & LOG GRAB & QUICK HITCH
- ◆ D 65 KOMATSU DOZER, RIPPER & TILT BLADE
- ◆ 10 YARD TIPPER
- ◆ COMPACTION ROLLER
- ◆ WHEEL LOADER

**AND MUCH MORE**

## Tim Morris MP

Tasmanian Greens Member for Lyons



*I say NO to selling off  
our School Farms and  
Research Stations*



**New Address:** Shop 9, Covehill Shopping  
Centre, Bridgewater 7030

**Phone:** (03) 6263 3801

**E-mail:** greens@parliament.tas.gov.au

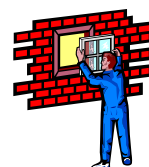
**www.tas.greens.org.au**

Authorised by Tim Morris MP, Parliament House, Hobart 7000.

## EAST COAST GLASS

Falmouth Ph: 6372 5361

- ▶ Glass repairs
- ▶ Shower screens
- ▶ Wardrobe doors
- ▶ Double glazing
- ▶ Aluminium windows
- ▶ Security doors



**Locally owned and servicing  
the East Coast.**

**Call David and Anne Cannon  
for prompt and reliable service.**

## HARRIS FUNERALS

**Lindsay & Diane**

(D. Bailey & son) A.F.D.A

**Ph/Fax: 6376 1153 Mob: 0418 133 420**

### Office& Residence:

114 Cecilia St  
St Helens

### Chapel:

46 Tully Street  
St Helens

**We are here when you need us  
to arrange Burial or Cremation.**

**Pre-paid and pre-arranged funeral plans are available.**





## MEALS ON WHEELS ROSTER

July		St Marys	Fingal
Monday	5th	Debbie Barnes	Carole Woods
Tuesday	6th	Trish Pike	
Wednesday	7th	Dianne Troode	
Thursday	8th	Heather Griffiths	
Friday	9th	Wendy Aulich	
<b>MOW Contact</b>		<b>Phone:</b>	<b>0488 384 344</b>
Monday	12th	Wendy Dawson	Maureen Hall
Tuesday	13th	Pam Bretz	
Wednesday	14th	B & B McAllister	
Thursday	15th	Kaye Nailer	
Friday	16th	Hannah Rubenach	

## Church Services

### Catholic Parish of St Marys

Sr. Lorraine Groves  
Parish House. Ph: 6372 2252  
Mob: 0409 172 741

#### 1st Sunday: MASS

St Helens Vigil 6.00pm  
Bicheno 9.00am  
Swansea LWC 9.30am  
Fingal 11.30am  
Campbell Town 5.00pm

#### 2nd Sunday: LITURGY

St Helens Vigil LWC 6.00pm  
St Marys LWC 9.00am  
Bicheno LWC 9.00am  
Swansea LWC 9.30am  
Fingal LWC 9.30am  
Campbell Town LWC 5.00pm

#### 3rd Sunday: MASS

St Helens Vigil 6.00pm  
St Marys 9.00am  
Swansea 11.30am  
Campbell Town 5.00pm  
Bicheno LWC 9.00am

#### 4th Sunday LITURGY

St Helens Vigil LWC 6.00pm  
St Marys LWC 9.00am  
Bicheno LWC 9.00am  
Swansea LWC 9.30am  
Fingal LWC 9.30am  
Campbell Town LWC 5.00pm

#### 5th Week MASS

St Helens Vigil 6.00pm  
Bicheno 9.00am  
St Marys 11.00am  
Swansea LWC 9.30am  
Campbell Town 5.00pm

### Anglican Parish of Northern Midlands

Avoca: 11am 2nd/4th Sundays  
Fingal: 3 pm 1st/3rd Sundays  
Mathinna: 3pm 2nd/ 4th Sundays  
Ross: 11am 1st/3rd Sundays  
Campbell Town: 9am every Sun.  
(3rd Sunday –Family Service)

### Anglican Parish of Break O'Day

Ph: 6376 1144

St Helens Every Sunday  
8 am and 10.30 am  
Kanga Sunday School  
10.30 am – 12 noon  
every Sunday for children 5/12 yrs  
St Marys every Sunday 10 am  
Pyengana: Kids Church,  
2pm - 4th Sunday every month.

### Salvation Army TUESDAY JAM

3-5pm every Tuesday.  
excepting school holidays.  
Envoy Melanie Norton Ph: 63722099

### Break O'Day Uniting Church

The Manse St Helens  
**Ph: 6376 2405**  
St Helens 9.00 am  
Fingal 11.15 am

### Seventh Day Adventist

Hodgeman Street Scamander  
Sabbath School 10 am  
Divine Service 11 am

## Contacts for Valley Voice

PH: Judy: 6372 2155

email: [judith.spilsbury@telair.com.au](mailto:judith.spilsbury@telair.com.au)

Accounts: Mary: 6372 2328

Please leave written material at the  
St Marys Pharmacy,  
Main St, St Marys,  
or post: C/- Post Office, St Marys Tas 7215

### **Advertising: 2010**

Classifieds: 25 words or less: free

Community notices : free.

Small boxed ads. Garage sales. Greetings.

Thanks etc. \$12.

¼ page \$20. ½ page \$30.

Full page \$50.

1 year posted subscription \$40.

### **On Air Now!**

Vision FM 88.0 at

St. Marys, St Helens  
and Fingal.

Robbo isn't alone at breakfast anymore.  
Shelley has joined him and  
they are calling the program  
'The Journey'

100% positive music & talk all day long;  
connecting faith to life.

National Vision Radio Network.

Phone 1800 007 770.

web [www.vision.org.au](http://www.vision.org.au)

## St Marys Online Access Centre Opening Hours:

Monday 10am -3pm

Tuesday 10 am-4pm

Wednesday 10am-4 pm

Thursday 10 am – 3 pm

Friday 10 am – 3 pm

Saturday 11 am – 2 pm

Ph: 6372 2005

## ST MARYS OP-SHOP

TRADING HOURS:

10AM — 3.30PM MON TO FRI.

PH:6372 2733.

**Come in and see for yourself  
just how much your local  
Op-shop has to offer.  
We have something  
for everyone!**

**Ph: Tracy 6372 2733**

June/July 2010

Mon	Tue	Wed	Thu	Fri
28 June ☐ 11/12 Parent Meeting	29 June	30 June	1 July ☐ ENE meeting	2 July
5 July <b>STUDENT FREE DAY</b>	6 July	7 July ☐ NHSSA Round 4	8 July ☐ Try-A-Trade Day	9 July
12 July	13 July ☐ Performance - Gr 3-10 ☐ St Marys School Assoc. Meeting 7pm staffroom	14 July ☐ State Primary Cross Country	15 July ☐ ENE Gymnastics Gr 3-6 ☐ Science Challenge ☐ Next Newsletter	16 July ☐ ENE Gymnastics P-2

## Student Free Day - Monday 5th July

SCHOOL DENTAL SERVICE

At St Marys School  
every Wednesday and Thursday

**Call  
6372 2488**

St Helens Dental Clinic, St Helens on  
63765208

Northern Dental Centre, Launceston on  
63364100.

**SALE**

Polo tops and  
polar fleece jumpers  
Sizes 18 - 24  
\$10ea  
limited colours  
and sizes  
Available  
First in best dressed.  
Cash or card only  
no holds  
(Available at school office)

## FLEXIBLE PROGRAM



Michael Thomas, Michael Larby, Jackson Spilsbury and Jamie Izard, pictured left, have been working on a flexible program in MDT with Mr Duke.

Michael, Jackson and Michael chose to make clocks after shaping a piece of timber, they varnished their photo, which had been enlarged, onto the timber. The clock motor was installed and hands were attached, finishing with a piece of rope around the outside to decorate.

Jamie shaped his boomerang and hand painted it. They were all very pleased with their finished product.

ST MARYS DISTRICT HIGH SCHOOL



# ENE Cross Country



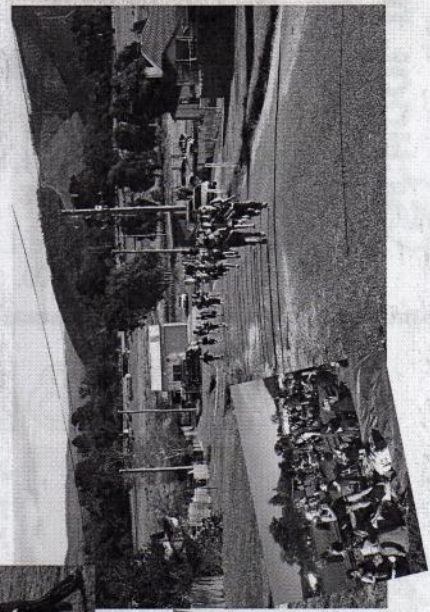
## Mathinna 2010

On Tuesday 22<sup>nd</sup> June 2010 a small team of representatives travelled to Mathinna for the annual ENE Cross Country.

St Marys were running in Division one against St Helens, Scottsdale and Bridport. St Marys Finished 4<sup>th</sup> overall.

It was a beautiful sunny day, a very unusual occurrence for this event and we had some outstanding individual performances for the day. In the grade 3 boys Jerome Smith finished 2<sup>nd</sup> and Brody Spriggs 3<sup>rd</sup> overall. In the grade 3 girls Sarce Salter finished 6<sup>th</sup> overall. In the grade 4 boys Lachlan Gee finished 3<sup>rd</sup> overall and in the grade 5 boys Jordan Riley finished 7<sup>th</sup> Overall.

Thank you to all the runners that represented our school so well on the day and tried their hardest in every race. Thanks also to the ENE Association and to the Mathinna community who put on a fabulous day.



# INTERHIGH CROSS COUNTRY 2010



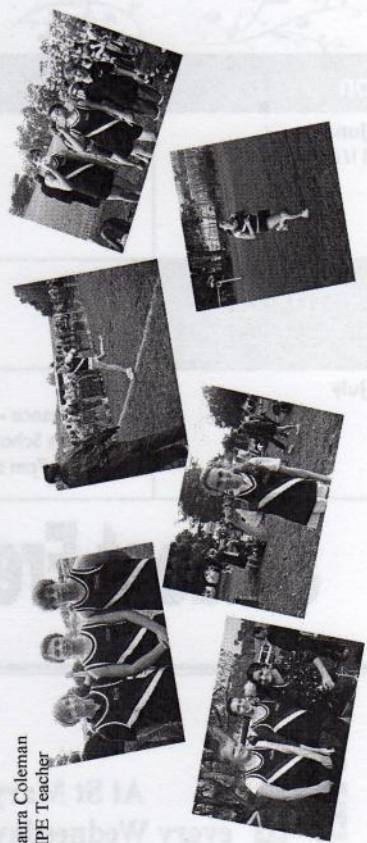
On Tuesday 18<sup>th</sup> May 2010 a small group of students travelled to Launceston to compete in the Inter High Cross Country Carnival at Kings Meadows High School. The day started with very foggy and cold conditions but warmed into a nice sunny day.

We started the carnival in excellent form, with Maya Ling finishing 1<sup>st</sup> in our division for the grade 7 girls. The other girls (Avalon Chippendale, Dakota Wise and Zoe Simpson) also performed well in this age group to finish in 2<sup>nd</sup> place in the teams event.

The other outstanding achievements came from the grade 9 boys teams event, with Corey Thow, Stephen Lea, Jack Broughan and David Nickson finishing second overall and Tyler Pirstock finishing 2<sup>nd</sup> overall in our division in the grade 10 boys event.

Well done to all participants in this event. The level of commitment to the team and the participation was outstanding. Thanks to the parents who attended to cheer on our kids.

Laura Coleman  
HPE Teacher



ST MARYS DISTRICT HIGH SCHOOL  
13 Gray Road, St Marys, TAS, 7215.  
Phone: 6372 3900 Fax: 6372 2543  
Email: st.marys.district.high@education.tas.gov.au



Tasmania  
Explore the possibilities



# ST MARYS COMMUNITY HEALTH CENTRE

## DOCTORS ROSTER

30th June-14th July Dr Baguley

## AFTER HOURS SERVICE CONTACT NUMBERS

PLEASE PHONE GP ASSIST ON 1300 780 011

AMBULANCE 1800 008 008 or

EMERGENCY 000

COMMUNITY HEALTH CENTRE 6372 2111

**BEFORE PRESENTING AFTER HOURS.**

St Marys Community Health Centre

GP Surgery Hours:

Monday—Friday 8:50am-12:30pm

12:30pm-1:30pm LUNCH

## PATHOLOGY SERVICE

No Pathology Service between  
12:00-1:30pm or before 8:30am daily.

If you require Pathology **before 8:30am** an appointment **must** be made with the Nurses Station **the day/night before.**

## INR TESTS

A doctor's appointment is required if you are having an INR test. Please **let reception staff know when making your appointment that you are having an INR test.** This is a 5 minute doctor consult.

## SCRIPTS AND DOCTORS APPOINTMENTS

Please ensure doctors appointments are booked **prior** to your medication/s running out or **in advance** if you are attending this practice regularly.

Scripts **can not be requested by patients over the phone** and are unable to be done over the weekends, ensure you have enough medications in advance. **PLEASE BE PATIENT** waiting periods **can apply.**

## IMPORTANT INFORMATION TO PATIENTS

If you are unable to get a doctor's appointment at the time of ringing and you feel you need more urgent medical attention please inform the reception staff who will put you through to the Nurse on duty.

Daily Doctor appointments are not always available but if the need arises we can prioritise.

If in doubt— Call an Ambulance 000

## WHAT'S ON AT THE CENTRE

30th June **Podiatry**— Lightfoot Podiatry. For appointments please phone 6331 9568

**Day Centre**— For details on the group please contact Hayley Gilbert

1st July **Continence Nurse**— Heather. For appointment please see you GP or Health Professional for a referral.

5th July **Social Work**— Helen Jennings. Please phone 6372 2111 for appointments

**Hospital Auxiliary Meeting** 1:30pm in the day Room.

6th July **Social Work**— Helen Jennings. Please phone 6372 2111 for appointments

**Child Health Session** with Sue Gofton every Tuesday— Appointments only. Please phone 0428 136 381

7th July **Day Centre**— For details on the group please contact Hayley Gilbert on 6372 9512

**Social Work**— Helen Jennings. Please phone 6372 2111 for appointments

12th July **Social Work**— Helen Jennings. Please phone 6372 2111 for appointments.

13th July **Child Health Session** with Sue Gofton every Tuesday— Appointments only. Please phone 0428 136 381

**Tom Bain, Rae & Partners Lawyers.** At the Community Health Centre Tuesday fortnights. For appointments please phone 6337 5555

**Social Work**— Helen Jennings. Please phone 6372 2111 for appointments

14th July **Day Centre**— For details on the group please contact Hayley Gilbert

15th July **Eyelines.** For appointments please phone 1300 139 363. All consultations Bulk Billed to Medicare

**GP Podiatrist**— Annabel. For appointments please see your GP for a referral.

16th July **Diabetes Educator (GP North)** — Appointments available by referral from your GP

**Dietician (GP North)** - Appointments available by referral from your GP

**Exercise Physiologist (GP North)** - Appointments available by referral from your GP



JULY IS

## DIABETES AWARENESS MONTH

Check out the Display Boards in the Reception area of the Health Centre  
*Each month we will be promoting a different Health Event*

People with Diabetes have a higher risk of developing diabetes complications, including heart disease, stroke, high blood pressure, circulation problems— possibly leading to amputation, nerve damage and damage to the kidneys and eyes. Ask your GP for further information or COME IN TO THE HEALTH CENTRE AND SEE FOR YOURSELF!



# Get Active St. Marys

**Where: St. Marys Community Health Centre  
Healthy House offices (under the day room)**

**When: Thursday 1st July  
10.00 am**

**The Healthy House will be bringing  
the highly acclaimed Get Active Program to St. Marys  
Come along to the Community Centre to help  
choose a range of activities for your wellbeing.**

Enjoy being active in a friendly, supportive atmosphere.

Enjoy activities you may not have tried before.

Learn how to set yourself goals and achieve them.

Gain confidence to try activities you only dreamed of.

Learn self-management skills that will assist you to  
independently participate in physical activity.

Take the opportunity to do something for yourself without feeling guilty.

**REGISTRATION IS ESSENTIAL**

**Phone 63765242**

**For more information call Fiona on 63765242,  
Transport can be arranged if  
booked.**



Healthy Community Project



# Fingal Primary School News



## ENE Cross Country At Mathinna

On Tuesday the 22nd June, 2010 teams from St Helens, St Marys, Bicheno, Avoca, Bridport, Scottsdale, Ringarooma, Winnaleah and Fingal travelled to Mathinna to compete in the annual ENE Cross Country. It was a splendid day with all students trying their hardest. It was a long way around the track but all students competed and had a wonderful time.

Fingal's team was Clare Bishop, Daniel Bishop, Dylan Brown, Demi Brown, Bridgette Burns, Sam Herbert, Joel Cox, Lisa Freeman, Harvey Flynn, Grace Gee, Chloe Harris, Jorgia Woods, Carley Baldwin, Jayden Bosworth, Sharnee Casserly, Melanie Guy, Kris Madden, Kurtis Tuck, Sophie Guy, Kallam Brittain, Lloyd Bosworth, Nakea Brown, Rebecca Brown, Kimberly Burns and Leo Davies.

### Winners of

Division A : St Helens

Division B : Bicheno

Division : C Fingal

### Congratulations to :

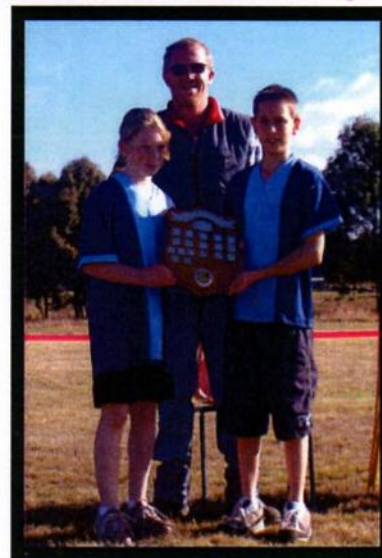
Clare Bishop 1st in the Grade 4 Girls

Leo Davies 2nd in the Grade 4 boys

Sophie Guy 4th in the Grade 3 Girls

Sharnee Casserly 6th in the Grade 5 Girls

Daniel Bishop 7th in the Grade 6 Boys



Grace Gee, Daniel Bishop and Robert Parsons with the Division C shield.



Bridgette Burns and Chloe Harris.

Lisa Freeman and Jorgia Woods.



## Calendar of Events - July

5th Moderation Day Student Free Day	6th	7th	8th Assembly 2.15 p.m.	9th Launching into Learning 10.00-11.30 a.m. Prep-6 having Lunch at St Marys School
12th	13th	14th	15th East Coast Gymnas- tics Carnival at St Helens Grade 3-6	16th Launching into Learning 10.00-11.30 a.m. East Coast Gymnastics Carnival at St Helens Grade 3-6



St Marys Sports Centre Inc. news Kackhander.

Not a real lot to report this time around but some really good news and a great initiative at the club is the new golf competition opportunity.

This new initiative is a great way to encourage more use of the ever improving golf course by offering both men and women golfers the chance to play a real comp in a mixed format on Wednesdays. That is mixed in that women and men play the same event most of the time.

We believe it works really well at other clubs and if it means decent numbers at least on Wednesdays then it will be a great thing to happen. Congratulations to all those involved in this concept.

By the way if you are a new person to the area or a person who has just decided over the years to not play either golf or bowls for whatever reason .... we'd love to see you come along or come back. The main objective of the club this year is to try to increase our membership. We have a unique facility offering so much and we want more people to come over and at least have a look at us. **YOU WILL BE MADE VERY WELCOME.** We promise.

It seems we also have a dedicated member who has kindly offered his services to take on the important role of club captain. A HUGE thank you must go to Barry Harrison. It means a lot and if we can help him out we really must. Thanks again.

Anyway, until next time, good hitting and rolling.

**Does pushing the elevator button more than once make it arrive faster?**

**Did you ever notice that when you blow in a dog's face, he gets mad at you, but when you take him on a car ride, he sticks his head out the window?**

## ST MARYS SPORTS CENTRE INC.

### NEW GOLF COMPETITIONS

STARTING WEDNESDAYS

9.30 FOR 10AM START

MIXED COMPETITIONS

REGULAR COMPETITIONS ORGANISED

COME ALONG AND

ENJOY YOUR DAY OF GOLF.

MORE DETAILS:

PHONE BETH HAAS - 6372 2127

BOBBY HARWOOD - 6372 2445



**38 Main Street St Marys**

Phone/Fax 6372 2240 - Butcher Ph: 6372 2274

**Mon – Fri 8am – 6pm**

**Sat 8am 12 noon**

### **This week's specials.**

#### ***From the butchery***

Blade roast	\$ 6.99kg
Lamb forequarter chops	\$ 7.99kg
Rump steak	\$10.99kg
Casserole steak	\$ 7.99 kg
Boneless lamb roast	\$14.99kg

#### ***Uncle Tobys promotion***

Vita Brits 750g/Vita brits 455g	\$3.75
Oats So Tasty 460g	\$3.99
Quick/Traditional Oats 1kg	\$5.45
Fruit Fix bars 130g	\$3.99
Muesli bars 120/185g	\$3.49

#### ***From the freezer***

Nestle drumsticks Vanilla 24pk	\$21.99
Peters icy poles 8pk	\$ 3.99
I & J fish fillets 570g	\$ 8.75
Ingham value selections 350g	\$ 5.45
Pampas puff pastry 1kg	\$ 5 35

### **Next week's specials.**

#### ***From the butchery***

Legs of lamb	\$ 8.99kg
Regular mince	\$ 8.99kg
Porterhouse steak	\$14.99kg
Marinated roast	\$10.99kg
Ingham free range chickens	\$ 6.99kg

#### ***Cold & flu fighting specials***

Panadol cold & flu tablets 10/20s	\$11.99
Fishermans Friend 25s	\$ 1.79
Strepsils throat lozenges 36s	\$7.55
Kleenex Man-size tissues 100s	\$3.49
Allens Buttermenthol/Soothers/Throaties	\$1.49

#### ***Instore specials***

Sunrice pour& store rice in container 1.5kg	\$2.49
Lipton teabags 100s	\$3.99
Maggi super noodles 68g	\$1.49
Campbells chunky soup 500/505g	\$2.79
Spree Ultra laundry powder bonus 3kg	\$9.99



**DON'T FORGET  
OUR NICHOLS**

**HOT CHICKENS  
\$11.50 EACH**

# DESIGNER HAIR STUDIO

46 Main Street St Marys

\$20 wash and blow dry      \$25 sets  
\$22\* dry trim                \$35\* restyle  
\$18 mens trims              \$5 beards

\$55 semi colour short hair  
\$65 semi medium hair  
\$75\* semi long hair

\$65 permanent colour short hair  
\$75 permanent colour medium hair  
\$85\* permanent colour long hair

\$35 regrowth application  
\$25 toner

\$20 (6 foils)  
\$35 (10 foils)  
\$50\* (1/2 head foils)  
\$70\* (full head foils)  
fashion colours extra

Now offering '**deluxe**' colour services where u will receive a trim, shampoo and conditioner for coloured hair with any semi or permanent colour service from \$105\*

perms/body waves from \$65  
spirals from \$85  
chemical straighten \$250 to \$350

\*price subject to change

**PH: 63 722108 for apps**

# DESIGNER HAIR STUDIO

46 Main Street St Marys

\$20 wash and blow dry      \$25 sets  
\$22\* dry trim                \$35\* restyle  
\$18 mens trims              \$5 beards

\$55 semi colour short hair  
\$65 semi medium hair  
\$75\* semi long hair

\$65 permanent colour short hair  
\$75 permanent colour medium hair  
\$85\* permanent colour long hair

\$35 regrowth application  
\$25 toner

\$20 (6 foils)  
\$35 (10 foils)  
\$50\* (1/2 head foils)  
\$70\* (full head foils)  
fashion colours extra

Now offering '**deluxe**' colour services where u will receive a trim, shampoo and conditioner for coloured hair with any semi or permanent colour service from \$105\*

perms/body waves from \$65  
spirals from \$85  
chemical straighten \$250 to \$350

\*price subject to change

**PH: 63 722108 for apps**

# DESIGNER HAIR STUDIO

46 Main Street St Marys

\$20 wash and blow dry      \$25 sets  
\$22\* dry trim                \$35\* restyle  
\$18 mens trims              \$5 beards

\$55 semi colour short hair  
\$65 semi medium hair  
\$75\* semi long hair

\$65 permanent colour short hair  
\$75 permanent colour medium hair  
\$85\* permanent colour long hair

\$35 regrowth application  
\$25 toner

\$20 (6 foils)  
\$35 (10 foils)  
\$50\* (1/2 head foils)  
\$70\* (full head foils)  
fashion colours extra

Now offering '**deluxe**' colour services where u will receive a trim, shampoo and conditioner for coloured hair with any semi or permanent colour service from \$105\*

perms/body waves from \$65  
spirals from \$85  
chemical straighten \$250 to \$350

\*price subject to change

**PH: 63 722108 for apps**