



# *The Valley & East Coast Voice*

*Volume 44 No. 6. Thursday, July 14, 2011.*

*Est. 1968*

*50 cents*



*St. Marys Tigers Football Club Inc.*

## **AFL Masters Football back in St Marys**

In what promises to be a bumper day of football in St Marys the mighty Tigers will be hosting a big double header at the St Marys football ground on Sunday 24 July. Following Auskick Launceston will take on Claremont in the first game at 11.30am followed by St Marys against Sandy Bay/Hutchins at 1.00pm.

Both Launceston and St Marys had great wins at the last northern Masters match held at Windsor Park in Launceston back on 25 June. St Marys had a memorable victory against Sorell and Launceston ran out comfortable winners against Lindisfarne. Both of these southern teams are close to the top of the ladder in their respective divisions in the Hobart competition, so both Launceston and St Marys, as the only northern



Masters teams are right up there and are competitive with all teams in the state. What this means is that the people of St Marys and surrounds will be treated to some of the best Masters footy they are ever likely to see in Tasmania.

Entrance on the day will be by gold coin donation and the girls of the St Helens District Under 17 representative netball team have kindly volunteered to run the gate and will also be running a raffle to be drawn on the day. Combine this with Auskick which will be run in the morning before the games, and St Marys will be right in the thick of the sporting action. The football ground is in excellent condition so if the weather is good all the ingredients will be there for a fantastic day.

This game is the last rostered home game for St Marys for 2011 and while there is hope of a further social game later in the year, this will be the last opportunity to see the resurgent St Marys tigers in action in full match conditions. The Tigers have really developed this year and are now a fully competitive masters team playing some great footy. So gather up your black and yellow scarves and beanies and let's make this a memorable day for St Marys. Come along and cheer your team while also catching a great game between Launceston and Claremont.

Let's also acknowledge the efforts of teams travelling up from Hobart to help promote Masters footy in the north of the state and also helping the resurgent Tigers to go from strength to strength. Let us make sure we show everyone that we are a town that loves our footy and supports our local team. It's been a hard slog getting a St Marys team back on the paddock but we now have a team we can be proud of so let's show them our support.

A full range of food and refreshments will be available.

**So mark July 24<sup>th</sup> on your calendar**

**as local footy day**

**and turn up for the Tigers!**



**SHOP LOCALLY AND SAVE**

**Please note: Deadline for articles in the next Valley Voice is 5pm Tuesday July 26, 2011**

**EMAIL ADDRESS: [judith.spilsbury@telair.com.au](mailto:judith.spilsbury@telair.com.au)**

## Community news

**St Marys Hospital Auxiliary** meets the first Monday of every month at 2pm at the **St Marys Community Health Centre**.

**The Break O'Day Woodcraft Guild Inc.** meets for meetings the last Saturday of the month at 2pm at the goods shed behind the St Marys Railway Station.

The **Tasmanian Lymphoedema Centre Inc.**, holds meetings every 3rd Monday of the month at 10 am at the St Marys Community Health Centre, Day Care room.

**St Marys Ladies Midweek Tennis** 9.30am each wed. Need new players - of any standard-beginners welcome-childminding included - lovely safe place to bring toddlers while you play. **Ring Annette- 6372 2224.**

**St Marys Playgroup** meets each Monday 10.30am - 12 noon at the **Falmouth Community Centre**, during school terms. \$2 a session per child or \$3 per family. Please bring a piece of fruit to share and your child's personal drink bottle. Bikes plus helmets welcome. **Phone or text: Danyelle: 0427 073 100.**

**WOMBAT WALK LANDSCAPING GROUP** meet every Wednesday 9am to 12 Noon (weather permitting) at St Marys Musical Playground area to plant and maintain the rivulet park and flower bank - anyone interested in joining us - please come along and meet our group. **Contact -Robina 6372 2022.**

**St Patricks Head & Esk Valley Historical Society Inc** has a meeting one month and a field trip the next. We invite everyone to come along on the third Sunday of the month and enjoy an informative time with lots of fun. For more information Phone: Barry Aulich (637225752) Darlene Wright (63722416) or Jim Haas (63722127)

**The Scamander and Beaumaris Community Development Association** meets at 7 pm at the Scamander Sports Complex every third Wednesday of the month. New members are most welcome.

**The Falmouth Community** centre would like to advise members and the community that the new contact for bookings of club facilities is Rachel Woods. Rachel can be contacted on: **03 6372 5118.**

**Suncoast Singers** meet every Friday at 10am in the Catholic Hall - Cecilia Street St Helens. New singers always welcome... If you can yawn - you can sing. Phone Mary-Anne Wadsworth **6376 2969.**

**Break O'Day Regional Arts** - General meetings held on the first Wednesday of each month at 5.30pm in the supper room at the back of the St Marys Hall. All welcome. Inquiries to Colin **6372 2707.**

Meeting dates for **Friends of St. Helens History Room & Museum for 2011.**

**Executive Meeting Dates:** 01/08/2011- 07/11/2011

**General Meeting Dates:** 22/08/2011- (AGM) 28/11/2011  
Contact the Centre at **6376 1744.**

**St Helens Alcoholics Anonymous (AA)** Wednesday 8pm Weekly. St Pauls Anglican Church Hall, St Helens. Murdoch **6376 3335.**

**St Helens Al-Anon Family Group (Al Anon)** To help families and friends of alcoholics recover from the effects of the living with the problem drinking of someone close. Sunday 2pm weekly. St Pauls Anglican Church Hall St Helens  
Anne or John **6376 4270** or Rose **6376 3335.**

**St Marys Alcoholics Anonymous (AA)** Friday 8pm Weekly. Holy Trinity. Mick & Shirl: **6372 2909.**

### SENIORS KIOSK



**Are you aged 50 years or over?**  
**Would you like to have basic computer skills?**  
**Would you like to enhance the skills you have?**  
**Would you like to email, surf the net, pay bills online, or simply play computer games?**  
**Would you like advice in purchasing a computer for around \$300?**

**If your answer is yes to any of these questions then come into the St Marys Online Access Centre at 23b, Main St, St Marys and talk to one of the friendly volunteers.**

**For everyone over 50 it is all free**

**MANGANA MISSION MUSICIANS JAM NIGHTS**  
Monthly musicians jam nights will be held at Mangana Mission, 63 Elizabeth Street, Mangana on the 2<sup>nd</sup> Friday evening every month.

Aug.12<sup>th</sup> Sept. 9<sup>th</sup>, Oct. 14<sup>th</sup>, Nov 11<sup>th</sup>, Dec 9<sup>th</sup>.  
Starting time will be 6.00 pm. BYO meat and drinks for a BBQ. All styles of music, instruments and vocalists are very welcome.

For more information call André or Kate on 6374 2212

**The Break O' Day Stitchers** meets each Friday in the Bungalow at Neighbourhood House in St Helens from 10 a.m. to 3 p.m. and participants are welcome to stay for as long or short a time as they may choose. The choice of projects to work on is also optional - either to bring your own work or join in and assist on a group project.

**The St Marys Memorial Association**  
**will be commemorating**  
**Vietnam Veterans Day/ Long Tan**  
**at the**  
**St Mary's Cenotaph**  
**at 1.30pm on the 18<sup>th</sup> August 2011.**

All residents and families are invited to attend.  
If you or your organisation would like to lay a wreath please phone  
**Wendy or Reon on 6372 2094.**

Classifieds in the Valley Voice are free of charge. If your articles are not sold after the first entry, we will repeat the ad in the next issue. Please let us know if items are sold. Every effort will be made to have correct details and phone numbers. However if there is a mistake, it will be corrected in the following issue.

# Classifieds

## For sale

**CB Radio.** GME Electrophone 40channel UHF, model TX472S, plus Electrophone 6DB & 9DB antennas, model no.AE-409. All set to go, including cable & brackets. \$120. ono. **Ph: Max 6372 5541 or 0418 992 217.**

**Astronomical Reflector Telescope.** Saxon FR900 x 130, with motor drive, hand control & battery case, aluminium tripod, all eye pieces, manual and accessories included.

To buy new: \$630. Will sell for \$250.ono.

**Ph: Max 6372 5541 or 0418 992 217.**

**Wood heater,** Ultimate supreme, 18 months old in very good condition. 3 speed fan, triple burn system, large glass window. will heat 180 sq meters. \$1200. (cost over 2000 new) (no flue)

**Ph Rick: 0419 788 407 or 6372 2659.**

**Motor cycle** 2007 YZ 85. Good condition. \$1650.

**Ph: Ryan on 0447 409 155.**

**'82 WB Panel van,** auto, \$3,500. firm.  
**Ph: 0459 388 478.**

**As new Q/S mattress protector.** \$15.**Set golf clubs,** used twice. Includes buggy, bag and golf balls. \$65.  
**Venetian blinds** - 3 x 7' wide x 4' drop \$10ea. 2 x 3' wide x 3' drop. \$5ea. Off white. **Ph 6372 2531.**

**Bosch 2sp Power drill.** 420w, 800rpm—1500rpm. Ex con. \$35. **Ph: 6372 5541 - 0418 992 217.**

**Everhot combustion stove** with low pressure hot water cylinder, in good working order. \$500. **Ph: 0427 603 488.**

**'80 Subaru 4Wd 5spd touring wagon,** running order good drive train, unreg, wreck or relic.

\$550. ono. **'87 Hiace LWB Van,** 5 spd petrol running order, unreg, wreck or relic. \$550. ono.

**'88 Yamaha 50cc scooter.** Lic runs well. \$750.

**Ph : (03) 6311 1637 (Not Saturday)**

**Corner vanity unit,** new. \$120.**Aluminum window** 2276 x 165cm with amber glass at top.\$80.  
**Ph: 6372 2446.**

**Palsonic 19" LCD TV,** very good condition. \$75.  
**Girls computer/make-up cabinet with lights and mirror.** Pink and white melamine. Very good condition. \$100. **Coffee table/ chest** (900 x 500w x 500h) excellent condition. \$120. LG DVD player (as new) \$50. Samsung DVD player, excellent condition. \$50. **Contact Karen Polden Ph: 6372 2438 or mob: 0439 333 398.**

**Exercise Bike** \$30. ono. **Walkie Talkie Set** 2km range. \$10. **Laser Level + tripod.** \$45. **Wilkinson Hand Saw,** set 1/4" router bits (new). **25w heater** for fish tank or beer making. (new). **Large plastic pulley metal frame. Basketball hoop.** Tyre pressure gauge **PSI.** Chrome door handles with catch. Grease gun. Pair size 9 men's heavy duty wellingtons. good cond. Plus more. Please phone 6372 2412. M & G Derbyshire.

16 Cameron St. St Marys.

**"Moo-Poo".** Finely screened. Any quantity. See Norm.  
**Ph: 6372 2380.**

**Portable milling available. Ph: 0427 715 577.**

**Frozen blueberries** - \$11 kilo **Phone 6372 2341.**

## GIVE AWAY

### CRAFT WOOD

**Trimmed branches from recently felled conifer (cedar?) for crafty people.**

**Thumb thickness to wrist size.**

**About a ute load.**

**Can deliver.**

**Ph. 6385 2114.**

## WANTED TO BUY

### OLD STYLE MOTOR BIKES

**PH: 6391 8689**

## WANTED

**SPINNING FLEECE, ANY COLOUR.**

**10CM LONG, OR LONGER.**

**Phone Rosa on 6372 2238.**

## WANTED

**OLD WATER TANKS  
FOR ANIMAL SHELTERS.**

**PH: 6372 2336**

A course is being run by Break O'Day Stitchers on Saturday 30 July 2011, from 10 a.m.to 3 p.m. in the Bungalow at Neighbourhood House in St Helens to make a Braided Table Runner for a fee of \$15.00 which includes tea, coffee and biscuits. Bring your own lunch, sewing machine etc. Details and bookings can be made with the tutor - Kay Roberts - 0402 007 802 or by e-mail - [paradox64@bigpond.com](mailto:paradox64@bigpond.com)

## GARAGE SALE

**16 OSPREY DRIVE  
STIEGLITZ ST HELENS**

**Everything must go.**

**Household items, toys, bikes,  
books & stereo system.**

**Make an offer**

**SATURDAY JULY 16, 2011. 9AM - 2PM.**

**Garden mulch.** Large square bales of straw.

**Free delivery in St Marys area.**

**Ph: Mark or Alana: 63722145.**

**Small square bales of garden mulch \$5.**

**Small bales of grass & clover hay. \$5. (undercover)**

**Garden mulch,** in big round bales. (wheat straw, weed free) \$60 a bale, delivered free in St Marys area.

**Ph: 0407 944 158.**

**Tractor slashing available. Ph: 0407 944 158.**



www.fingalvalleyhistory.com

## ANNUAL GENERAL MEETING

The Annual General Meeting of the St Patricks Head & Esk Valley Historical Society Inc will be held at the St Marys Online Access Centre on Sunday the 21st August 2011 at 2:30 pm

*ALL PAST, PRESENT MEMBERS AND THE GENERAL PUBLIC ARE WELCOME TO ATTEND*

*Jim Haas, Public Officer*

## NOTICE OF ANNUAL GENERAL MEETING

The Fingal Valley Meals on Wheels Association will be holding their AGM at the St Marys Community Health Centre at 2pm on the 16th August, 2011. All welcome. Lundy Vosper (Secretary)

## CATHOLIC CHURCH FUND RAISER

TO ALL OUR LOYAL SUPPORTERS

PLEASE NOTE:

OUR USUAL

“CHRISTMAS IN JULY”

WILL NOW BECOME A

“WELCOME INTO SPRING”

DINNER

TO BE HELD IN SEPTEMBER.

WATCH THE VALLEY VOICE

FOR MORE DETAILS.



## Join Us for a Winter Warmer

**Hot home made Soup and Bread,  
a dessert you will never forget!**

**Get out of the kitchen and enjoy  
a night of food, fellowship, and fun.**

**Our monthly Saturday night dinner served  
to our family, friends, and guests at the  
St Marys Anglican Church.**



**Hope to see you on**

**Saturday the 20<sup>th</sup> August 5pm**

**Bring an empty tummy, so we can fill it up!**

**RSVP by Wednesday 17<sup>th</sup>**

**Juanita 6372 2952 or Barbara 6372 2428.**

## Tasmania Valleys of Adventure

AVOCA - ROYAL GEORGE - ROSSARDEN - FINGAL - MARGARA - MATHURIA - UPPER ESK - CORNWALL - ST MARYS

## GREATER ESK TOURISM

### Next Meeting:

**Monday, 8<sup>th</sup> August, 7pm**

Fingal Neighbourhood House

Fingal 7214

**Notice of AGM – 12 Sept 2011**

**ALL WELCOME**

**Enquiries – 03 6372 2783**

## Bicheno Indoor Market

**When:** every last Sunday of the month  
until end November 2011.

**Where:** Bicheno War Memorial Hall

9am – 1pm

**Hot Foods – come and enjoy breakfast,  
morning tea or lunch.**

### Variety of Stalls

More stall space available:

**Contact David Logie: ph. 6375 1129.**



## Sunday Market

*Happening :*

*At the Old Tasmanian Hotel*



**On the last Sunday of the Month**

***Please ph 6374 2344 or mobile 0488 562 538***

***to book your table/trestle***

***Needed: fruit & veggie stall holders***

## Stallholders Market Inc.

Is a non profit organisation holding markets every Saturday from 8am in St Helens, at the Library car park. There is a variety of stalls and the fees charged to stall holders is donated to various charities.

For stall booking and other inquiries, please phone Marilyn on 6376 1858.



## St Marys Market

Rain hail or shine the markets will be held on the 1<sup>st</sup> Saturday every month in the community hall 9am till 2pm.

New stall holders welcome

Phone Colin 6372 2707 or Sue 6372 2512

## Vietnam Veterans Day

18th August, 2011.

The Service will commence at 11am at the  
**Vietnam Veterans Memorial Site,  
at the Cenotaph in St Helens.**

If you wish to join our Veterans in the march, form up will be at Hilly's Supermarket at 10.50am. You are also invited to lay a wreath for the fallen during the Remembrance Service.

Gary Graham  
Vice President V.V.A.A. East Coast  
Ph: 6372 5727.





## General Stores

With the big chain supermarket and hardware stores being so much part of everyday life these days, it's hard to remember what it was like a few decades ago when the humble general store was as important to country towns as the pub.

In the general store you could buy anything from a pound of butter to a rat trap, from a pair of hobnailed boots to a Bluey coat. For the more adventurous you could buy from a hammer and nails to a stick of dynamite, or a firearm and ammunition to go hunting. In fact there was virtually nothing that one would need that could not be purchased at the general store.

These days, perhaps, the closest we have to a general store in our part of the world is the historic Morris store at Swansea. This old iconic building, which dates back to 1834, is one of the oldest stores still remaining in Tasmania and although a modern supermarket has been built on the northern end, the old building is still packed with everything that opens and shuts, very much like the general stores of yesteryear.

The first general store of any note to open in the Fingal Valley was Holder Bros at Fingal in 1859. In 1861 a Mr Lade and Mr Morris, who had a store at Falmouth that was reported to be running at a loss, opened the first general store in St Marys.

In those days the road into St Marys from Fingal followed the Break O'Day River on the southern side, entering the town through a ford at the bottom of Cameron or Clive Streets. As a result, Groom Street, where the police station and blacksmith shop were situated, became the site for the first store.

Lade and Morris built the store on the corner of Groom and Cameron Streets. James Morris, however, only stayed a year or two and moved to Swansea to take over the store there, which was originally owned and built by John Graham. At that time the store was only one storey, but as Swansea grew, so did the store and another two stories were added.

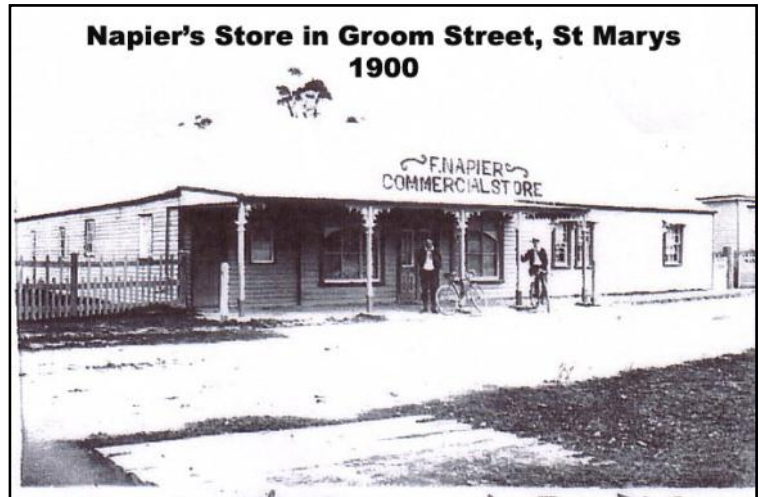
St Marys, too, continued to grow and when the railway came to town in 1886 there were a number of changes to the western entrance. The road leading from the station became Main Street and several businesses sprung up joining the hotel beside the rivulet. Hindles store, (the old Stan Graham building) H. C. Dawborn, (the current Value Plus Supermarket) and E. B. L. Dawson (now Cranks and Tinkerers Museum) were all general stores established towards the end of the 1800s to service the people of the St Marys district. E. B. L. Dawson was also a well known skin buyer who travelled the State buying skins and preparing them for export to many parts of the world.

Lade's store in Groom Street is also significant in history because it was the reason the Napier family came to St Marys. Frederick Napier purchased the store in the 1890s and ran it for several years before he took over "Sunny Banks", which at the time was part of Donald Cameron's "Londavra". Today when we think of the Napier family we associate them as being one of the largest property owners in the district and their contribution to the Fingal Valley economy has been in farming, rather than being one of the early general store owners.

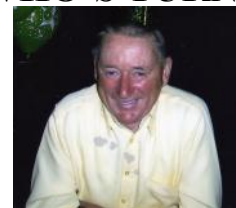
Whilst the current Jim Morris and his family are still able to hang onto the tradition of their general store at Swansea, the chances of similar stores making a comeback in country towns in the future are slim. The way forward appears to be self serve and pay as you leave the store with a credit card placed into a machine. Or, perhaps, one day we will all have to buy online, with the goods delivered by courier.

The friendly, personal, one to one service given to the customer by past storekeepers like Geoff Dawson of E. B. L. Dawson, or Joe Wilson of H. C. Dawborn, is slowly disappearing and soon will only be a memory in the minds of just a few.

**Jim Haas**



## \*\*\*\*\* ★ GUESS WHO'S TURNING 70? ★ \*\*\*\*\*



**DON "SCROOGE" BARR  
THAT'S WHO!!**

\*\*\*\*\*  
★ YOU DIDN'T THINK I'D MAKE IT DID YOU? ★  
\*\*\*\*\*

**KEEP THIS DATE FREE:**

**JULY 24, 2011.**

\*\*\*\*\*  
★ PLEASE HELP ME CELEBRATE MY 70TH. ★  
\*\*\*\*\*

**OPEN HOUSE - 2 NEWMAN ST**

**12 NOON ONWARDS.**

**SOUPS, SAVOURIES AND SWEETS,**

**ALL DAY.**

**ALL WELCOME. NO PRESENTS.**

**Come along for a lovely afternoon.**  
\*\*\*\*\*

## Letters to the Editor

Vol. 44 No 6, July 14, 2011

Dear Editor,

I would like to express my annoyance regarding the rumour mill and the fate of the old railway station.

I read with some concern the article in the Sun Coast News about this matter; first I wish to make very clear that I have no issue at all with the right of any rate payer or business operator to express a view about council expenditure, but, let us be sure that we are debating the facts not the fiction (refer letter to editor by Mrs Rita Summers earlier in the year)

The facts would appear to be as follows:

As part of the community consultation during the development of the council strategic plan the issue of the railway precinct as a "welcome to St Marys" was raised and a cultural/historic precinct suggested... how do I know... I wrote the submission.

Break O'Day Council... on behalf of us... the rate payers, purchased the railway station and, not unreasonably, intend to have a business plan (which will include wide community consultation) for the building developed, then go through a tender process (call for expressions of interest followed by rigorous scrutiny) for the site.

As an interim measure Council have entered into a lease arrangement with the Healthy House, an arrangement which solves an accommodation issue at the hospital, puts an occupant back into the railway station thus increasing its security and earns a few dollars for council into the bargain... I think the expression is "a win, situation".

No amount of imagination under the sun could credibly describe the Healthy House as competition for any business currently operating in St Marys... and even if they were the fact that they are paying market value rent plus outgoings, both levels the playing field and protects the interests of us, the rate payers of the Break O'Day.

How do I know this... I looked up the Council Minutes, had a conversation with the Director of Nursing at the St Marys District Hospital about the dental service and its implications on space allocation, and (just to be sure of my facts) I have spoken to several councillors and a council officer in the last six months about the railway precinct.

At this time the only givens are ... we the rate payers own the building and the Healthy House will rent it from us *pro tem*....any thing else is mere rumour and supposition. Let's wait for the business plan and the consultation before we cry foul. Indeed let's work together to preserve an important part of the town's heritage and tidy up the entrance to St Marys while we are at it. To talk about a town divided is I think, a little premature and not particularly helpful.

Kind regards,  
Wendy Fowler.

---

"Kitchen - what kitchen?"

I am amazed at the length of time it has taken for the council to replace the kitchen in the St Marys' Hall! I believe the project was started before Christmas 2010 - it's now July 2011.

It has made the life of those stall holders providing home-made soups/curries/cakes and cuppas to patrons of the monthly market very difficult, but they have all put up with it thinking it will be worth it in the end (which I'm sure it will). The Break O'Day Regional Arts' committee has had to postpone/cancel the annual event The Winter Solstice, in part due to a lack of kitchen facilities. We have moved the event to Saturday 6th August but will the kitchen be ready by then? I have no idea how many other community groups/members have been inconvenienced by this.

Come on Council - get moving!

Leissa Dane (this is my personal view and not that of the BO'DRA committee).

**Will Hodgman MP**

**Leader of the State Opposition**

**Letter to the Editor**

**Wednesday 6 July, 2011**

The Liberals congratulate every school community and school association for their hard fought win against the Green-Labor Government's disastrous policy to close up to 20 schools across Tasmania.

It was the strong conviction and actions of everyone involved in the campaign to save schools that has resulted in Mr McKim and Ms Giddings backing down. It is a victory for common sense.

While we welcome this unprecedented back-down from Labor and the Greens, it is however very concerning that the Government has merely delayed its plan to forcibly close schools for a year, not abandoned it.

All communities have our commitment that we will continue to push for the Government to adopt our position of no forced school closures so that the ongoing threat can be removed from all schools into the future.

In our recent Alternative Budget, we identified where the required savings could be made without sacrificing schools or cutting vital education services to the bone.

We urge the Green-Labor Government to remove the axe that is still hanging over the heads of these schools by adopting the Liberals policy of no forced school closures.

**Will Hodgman MP**

Letter to the Editor

The committee of Break O'Day Regional Arts (BO'DRA) would like to clarify their position on the recent purchase, by Break O'Day Council, of the Railway Station building in St Marys.

At no time was the committee approached or consulted about supporting the purchase by Council, nor asked to be involved in the possible future use of the building. The first most members of the committee knew of the purchase of the building was reading about it in The Examiner's publication, The East Coast News.

Some members of the community believed we did have input into the decision and as such, we have received negative feedback.

We were, however, asked to write a letter of support to Ian Summers with regard to the Cranks and Tinkerers seeking funding to build a shed to house their museum, in the vicinity of the railway building and Wood Guild's shed. This was a completely different issue, which we did agree to support and so did duly write a letter for them.

To this day, we still have not been approached by Council in any way in relation to the Railway Station building.

Regards,  
Leissa Dane,  
BO'DRA.

# gone rustic studio & gallery

37 main st  
st marys tas 7215

on display now – the notebook project from *fibre arts australia* (artists journals from around the country)

0363722724  
gonerustic@yahoo.com.au

16 july (saturday) – art journaling with *maggie fletcher*  
(\$10; byo cut lunch; tea & coffee provided)

online shopping:  
www.gonerustic.com  
www.gonerustic.etsy.com  
www.pilgrimcottage.etsy.com

contemporary art & craft

agents for wide span kit sheds & homes

quilts, collectibles, gifts & cards

exhibitions & workshops

rustic ragamuffins  
wednesdays 7-9 (\$5)

opening hours  
tues – sat. 10 – 4

member of greater esk tourism &  
tasmanian regional arts



## Life Celebration Memorial

for  
Mervyn Rohrlach  
87years young  
Born February 7<sup>th</sup> 1924  
Went Home to his Heavenly Father,  
9.15am July 8<sup>th</sup> 2011.



Commemoration service to be held at the  
Anglican Church St Marys,  
on Sunday the 24<sup>th</sup> of July at 12pm.

All who knew and loved Merv are welcome to  
Sunday service 10 am followed by a luncheon  
and a final farewell of our dearly beloved.

## From Elaine and the staff at the Possum – a very big and sincere Thank You!

What with Winter, and then St Marys Pass closing for more than a month, and now Elephant Pass closed for a similar period, business at Purple Possum has been slow and things have been tough.

But our wonderful customers have stood by us. We appreciate this loyalty and support from the bottom of our hearts, and we promise to maintain our very high levels of quality and service, even if we've had to trim our hours a little for the duration.

Once again, a big Thank You  
from Elaine and the team!

## Purple Possum

Monday to Friday	Open 9 am to 4.30 pm
Saturday	Open 9 am to 2 pm
Sunday	Closed





**St Marys Sports Centre Inc  
presents...**

# **Christmas in July**

**Come along and celebrate with us  
with all the Christmas fare you love.  
Santa will be making a special visit.  
Lucky prizes to be won.**

**Saturday 23rd July from 6pm.  
RSVP by Friday 15th July.**

**\$25 Adults**

**\$15 Children 13 & under**

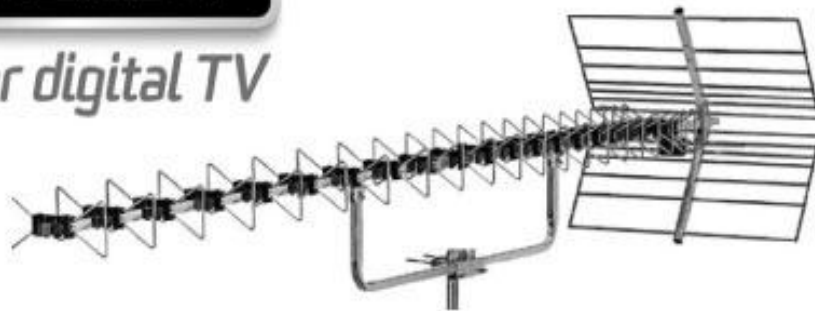
**Limited seats available,  
So BE QUICK!!!**

**Contact:  
Kim - 6372 2211  
or drop in to the Sports Club.**





# ***Are you ready?***



New antennas

Upgrade existing antennas

Additional outlets

Install/tune TVs & set top boxes

Remote area satellite TV & internet

Mobile telephone & WiFi antennas

Telephone & network cabling

***Prompt and affordable service***

Contact your local Government Endorsed Antenna Installer

**David Morris**

mobile: **0402 969 393**

email: **david@delafrontera.com.au**

**Government Approved Antenna Installer No. 2316**  
**Licensed Cabler No. B15017TAS**

## EAST COAST GLASS

Falmouth Ph: 6372 5361

- ▶ Glass repairs
- ▶ Shower screens
- ▶ Wardrobe doors
- ▶ Double glazing
- ▶ Aluminium windows
- ▶ Security doors



Locally owned and ser-  
vicing the East Coast.

vicing

Call David and Anne Cannon  
for prompt and reliable service.

## Yanni's

Café / Laundromat / Catering



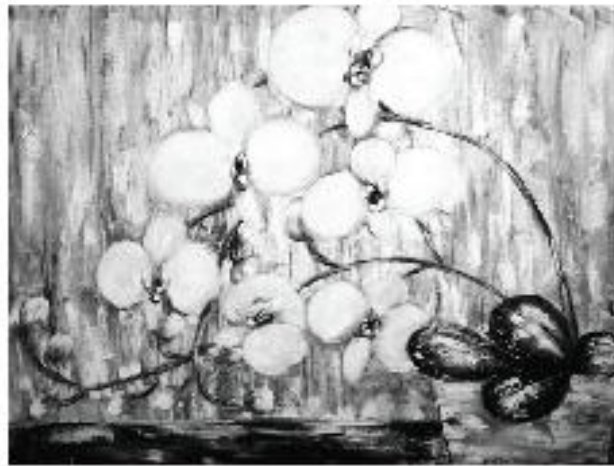
25 Quail St, St Helens, Tasmania. 7216.

Ph: (03) 6376 2629

Mob: 0400 054 110

email: marycporter@bigpond.com

## Fund Raiser Original Oil Paintings



Original Art Works, created with the purpose to help raise funds for a person who is fighting cancer.  
All the kindness is greatly appreciated.

Yours Sincerely,  
Natalia Dean

To view the complete range of Paintings, please visit :  
[www.nataliadean.com/fundraiser](http://www.nataliadean.com/fundraiser)



Would you like to know .....

### How to Prepare or Update your Will?

50% of Australians don't have a valid Will.

This means they lose control over what happens to their assets when they die.  
We invite you to obtain our free booklet that may answer your questions and show you how  
simple making a Will can be.

For more information please complete this form and send it to:

**Wills & Bequests, The Salvation Army, PO Box 50, New Town Tas 7008  
or Freecall 1800 337 082**

- ☐ Please send me a FREE copy of your Wills booklet      Name .....
- ☐ I have already included The Salvation Army in my Will      Address .....
- ☐ I am interested in including The Salvation Army in my Will      .....
- Phone .....

# **Main Street Clothing**

**STOCKTAKE SALE**

***UP TO 50% OFF***

---

**ALL FLOORSTOCK**

**(excluding MKM wear)**

**TWO WEEKS ONLY**

**14th - 28th July 2011**



## The Say Cagerattler

Regardless of whether it was direct decision making or indeed just political survival, all of us are sure pleased that the twenty schools feted for potential closure under a proposed Education Department savings package the State Government had planned to engage, is not happening. THANK GOODNESS... and what a relief for those involved in the twenty schools, not least our own Fingal campus of St Marys District School.

This school (Fingal) made some very smart decisions to federate with St Marys a little while back and are now in a much stronger position perhaps, to lead a measure that the razor gangs looking at budgetary cutbacks can look at realistically. Despite it being somewhat mystifying in the first place that Fingal was on the list, given being federated already and operating within one budget with St Marys the fact that this was the case would have made it a very difficult target anyway.

That said let's be gracious and thank the powers that be for the overall decision. I'd like to think now though that St Marys-Fingal federation can be used as a direct model for many of those schools threatened with closure and that if at all feasible these schools (and the powers in the big office) might consider at least federation style operations within close proximity of each other, if not full federation arrangements. This might lead to long term outcomes in resource management, duplication of resources and program opportunities. I believe it's working really well in our circumstances already and as a test case it has a lot going for it.

Finally on this matter much congratulations must go to the dedicated, clever, well informed and forthright group put in charge of the fight to keep Fingal. They were well and truly ready, and to the Fingal and St Marys townships who were fully standing in readiness to keep our SCHOOL. I emphasise the word school because that's exactly what we are, one school on two campuses. Well done to all involved. BIG brother didn't win.

I believe things are taking shape in regard to our potential new Cultural Arts Building. All parties are looking forward to September when much of the relevant decision making can or will be possible. Genuinely great news if it all happens.

What do you think ?

## Country Alert Levels to 2011 Threats : by JOHN CLEESE

The English are feeling the pinch in relation to recent events in Libya and have therefore raised their security level from "Miffed" to "Peeved." Soon, though, security levels may be raised yet again to "Irritated" or even "A Bit Cross." The English have not been "A Bit Cross" since the blitz in 1940 when tea supplies nearly ran out. Terrorists have been re-categorized from "Tiresome" to "A Bloody Nuisance." The last time the British issued a "Bloody Nuisance" warning level was in 1588, when threatened by the Spanish Armada.

The Scots have raised their threat level from "Pissed Off" to "Let's get the Bastards." They don't have any other levels. This is the reason they have been used on the front line of the British army for the last 300 years.

The French government announced yesterday that it has raised its terror alert level from "Run" to "Hide." The only two higher levels in France are "Collaborate" and "Surrender." The rise was precipitated by a recent fire that destroyed France's white flag factory, effectively paralyzing the country's military capability.

Italy has increased the alert level from "Shout Loudly and Excitedly" to "Elaborate Military Posturing." Two more levels remain: "Ineffective Combat Operations" and "Change Sides."

The Germans have increased their alert state from "Disdainful Arrogance" to "Dress in Uniform and Sing Marching Songs." They also have two higher levels: "Invade a Neighbor" and "Lose."

Belgians, on the other hand, are all on holiday as usual; the only threat they are worried about is NATO pulling out of Brussels.

The Spanish are all excited to see their new submarines ready to deploy. These beautifully designed subs have glass bottoms so the new Spanish navy can get a really good look at the old Spanish navy.

Australia, meanwhile, has raised its security level from "No worries" to "She'll be alright, Mate." Two more escalation levels remain: "Crikey! I think we'll need to cancel the barbie this weekend!" and "The barbie is canceled." So far no situation has ever warranted use of the final escalation level.

John Cleese - British writer, actor and tall person.

Paddy's in jail. The Guard looks in his cell and sees him hanging by his feet.

What are you doing?" he asks.

"Hanging myself," Paddy replies.

"It should be round your neck," says the guard.

"I tried that," says Paddy, "but I couldn't breathe."

Two Irishmen are hammering floorboards down in a house. Paddy picks up a nail, realises it's upside down & throws it away.

He carries on doing this until Murphy says, "Why are you throwing them away?"

"Because they're upside down," says Paddy.  
"You daft prat," replies Murphy, "save 'em for the ceiling!!"



**Reminder that Mt. Elephant Pancakes are open for after hour group bookings, birthdays, wedding anniversaries. ETC. Also Birthday person gets their meal free.**

**At present time we are open 10am -3pm daily due to pass closure.**

**A big thank you to those locals who have continued to support us while the pass is closed. Any enquiries contact Michael or Louise on 63722263 - Business Hours or 63722164 - After Hours.**

**E- Mail: [barerock@bigpond.com](mailto:barerock@bigpond.com) .**

**Yours sincerely, Michael & Louise Williams.**

## Tasbash 2011..... 21st Anniversary Year

From snowfields to beaches, dirt roads and rivers, (wheat fields to wildflowers, red dirt and the fabulous west coast,) join Variety Tasmania for an unforgettable eight day adventure on the 2011 Variety Tasbash.

Starting at Hobart on 15 October and finishing in Hobart on October 22, 2011, the Bash is a madcap journey complete with colourful costumes, camaraderie, surprise fun stops, entertainment and more.

The Bash is a carnival on wheels, bringing fun and excitement to regional communities throughout Tasmania. The Bash is not a race or a rally and speed is not important. What really matters is that everyone has a great time visiting parts of Tasmania they would not otherwise see, at the same time providing much-needed help to Tassie's sick, disadvantaged and special-needs children. As with all Variety motoring events, Bashers are bound by a strict code of conduct including Tasmanian Road Rules, safety and behavioural standards, with an experienced mechanical and medical crew on hand to assist whenever needed.

October

15th...Strahan, 16th... Wynyard, 17th...Launceston, 18th...Georgetown, 19th and 20th ...St Helens, 21st ...Coles Bay, 22nd...Hobart

Take a look at [www.variety.org.au/tas](http://www.variety.org.au/tas)

### Me and Tasbash

For those who know me, yes - I have been involved with "Variety The Childrens Charity" for approx 18 years...competing in 15 Tasbashes raising in excess of \$100,000, Originally Free Willy -Vauxhaull Cresta. Now in "s" Series Valiant called Splash!

My daughter Cherie, who most of you know, has Down's Syndrome, so I know the struggles families are faced with when raising, and supporting, a disabled child's needs. Now Cherie also participates, this will be her third TasBash.

In our specific area we have given to many appeals over the years to our special needs children from, computers to gym equipment, brail keyboards, and equipment for the riding for disabled project.

I also instigated and helped with the production of the Makaton sign videos, to help with hearing impaired and speech delayed children, these are available around the world, and for sale on the variety website (link above).

**Why I chose Variety**...The most important reason is that 97 cents of every dollar is actually spent on children's appeals (Tasmania has the highest return), secondly I love classic cars, thirdly I like to act the fool! It takes me away from the serious side of life! And last of all it gives me sense of pride to be associated with a great bunch of larrikins that have enormous hearts to give- and return year after year, it makes me grateful for what I have and the life I lead.

So that's why I have 2 weeks vacation per year to compete and raise money for this Wonderful organisation!

Please- don't take my word for it - Please -Please: look us up on the website and see what we really do!

Over the years we've received limited local support, as most of our businesses are small and are committed financially, supporting the local causes, and we do not wish to add pressure or take away from the great job they are doing locally.

Most of our monies \$4000 entry...has been raised by personal donations, and the occasional shindig...for those that remember ABBA and similar. Over the years we have extended invitations for locals to join our cars for a ride of a lifetime, but most- due to work pressures haven't been in the position to lose the eight days straight, from their jobs or annual leave, as meals and accommodation have to be supported personally by the competitors. But there are seats available!

The Tasmanian Bash is pretty special as we are known as the Boutique bashes, (we stay in comfort not in tents), we are on a par with our mainland bashers, as funds raised per capita, we do less outback kilometres but this enables us to have the best themed cars and we can keep them CLASSIC.

If you see our donation hearts around the town please drop us a gold coin, every dollar makes a difference in the life of a special child! If you would like to make a larger donation, please visit our Website (link above)

And enter splash in the comment box (for prompt direction and receipt return). Cheques can be written to Variety the Children's Charity, and posted to PO Box 242, St Marys 7215.

Once again we don't ask for a lot, just a little if you have some to spare.

Always Grateful,

Lynne Dawes 0427 560 565

### Our up-coming Fundraisers

Hair- a-thon

At... Designer Hair Studio

Tuesday 19th July

11am to 11pm

Hair cuts \$15

All monies to Tasbash

Lynne-Rachel on the floor,

Cherie on the broom .

### Fundraiser

Tasbash Car 2002

**SPLASH**

All proceeds to

Variety the Childrens Charity—21st Anniversary year

**Bus trip to 50s diner Deloraine**

**Admit one...\$45.00**

**20th August 2011**

*Inc- bus, meal and entertainment*

*Come as you are or dress bizarre*

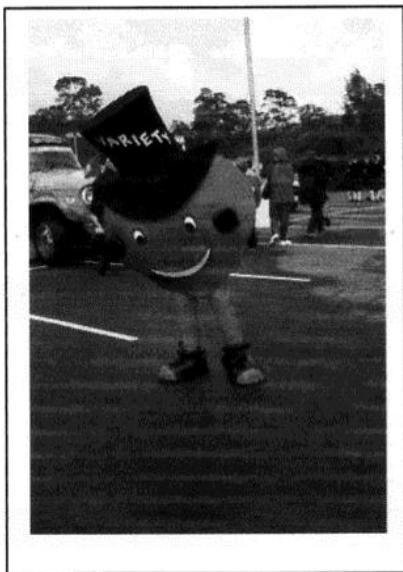
*—Grand Prixll*

Bookings in by 31st of July for bus confirmation and pick-up locations...there is a bus - also leaving from Launceston.

### Wanted

**Dis-used or Damaged Dinghy...for second car theme (black pearl)**

**Phone lynne 0427 560 565.**



## TasBash Entrant Car 2002

"Splash"

2011, Celebrating 21 Years!

Fundraiser – Bus Trip-Auction

Date: 20<sup>th</sup> August 2011

Location: 50s diner Deloraine

Cost: \$45 per person inc food

What?

Theme...Grand Prix

Grand Pricks and Big tits, come as you are or be a little bizarre,  
a meter maid ,a mechanic, or a ford supporter that's manic,

***We'll come from near and far, so-***

***we won't want the car,***

Let's climb on the bus without a sigh or a fuss,

As we head to Deloraine, in pit stop lane

with an element of mystery, as we surround our self in history

and rock and roll all night to raise monies for our plight,

we'll provide you with a feed', it's for special kids in need

bus pick up..... confirmed on booking

St Marys –Launceston- Deloraine

please confirm ticket/s (limited tickets) by 30-7-2011

lynne 0427560565.....

jan 0413804468

Please donate to our Anniversary year.

All donations are fully Tax Deductable

Thanking you for your generous support



### **Support your Community through your local Market.**

Did you know that the St. Helens Stallholders Market has been in operation for over 10 years. It is a non-profit organisation that has over the last 10 years donated \$4000.00 a year to local community organisations. Please see the attached chart to show where that money has been used over the last 5 years.

All Stall and Membership fees (other than insurance and running costs) are returned to the Community. Also, each week, stallholders run their own "raffle" – half of the profit goes to the winning ticket, the other half goes to local organisations.

Your local Market is working for your Community, so why not support it by being a regular customer or having a stall?

In recent times it appears that local support has waned. There are a small number of "regular shoppers" that do turn up each week (even in the winter) and we would like to acknowledge their support and say a big thank you.

There is a great camaraderie within the Market – a great social occasion for stallholders and a wonderful opportunity to talk to locals and visitors to our town. Many tourists come to take photos of the Mural and now the Dragon; this gives stallholders a chance to talk about the history of our little bit of paradise and suggest places to visit, places to eat or just have a coffee, and also to promote the Visitor Information Centre which is open at the same time as the Market.

\$4000 a year being donated back into Community organisations is a pretty good effort of which the Market is very proud. To enable this level of contribution to continue the Market needs support – not only from shoppers but also from more stallholders. The Market provides an "extra" attraction within the town for tourists on a Saturday morning.

The Market is keen to know how it can improve and grow. Give it some thought. If you have an opinion write and air your views. Change can only happen when people stand up and be counted. Your Local Market will only survive with your participation.

ORGANISATION	2007	2008	2009	2010	2011
St. Helens Fire Brigade	500	500		500	
Scamander Fire Brigade		500		500	
Binalong Bay Fire Brigade		500		500	
St. Helens Volunteer Ambulance			500	500	
Wheels of Change				500	
St. Helens Hospital Auxillary		500		500	1330
St. Helens Anglicare	300		200	200	200
St. Helens Marine Rescue	200	200		200	1330
Royal Flying Doctor Service			1000		
Tas. Lymphoedema Centre Inc.			300		
Suncoast Singers			300		
St. Helens Coastguard			200		
St. Helens GKR Karate Club		500	100		
Victoria Fire Relief Appeal			1000		
Medea Park Bingo Group			100		
St. Helens Naval Cadets		200	500		
Star FM Radio			250		
Riding for the disabled		500			
St. Helens SES	500				
Fire Relief Appeal	2000				
Men's Shed	500				
Kids in Care					1330
	40000.00	3400.00	4450.00	3400.00	4190



## TENDER Provision of Cleaning Services St Marys No. 07-2011

Tenders are called for the cleaning of Council facilities and amenities in the township of St Marys. Tender specifications are available from Council offices at Georges Bay Esplanade, St Helens, Council's website [www.bodc.tas.gov.au](http://www.bodc.tas.gov.au), by contacting Marilyn Keenan on 03 6376 7900, by email to [marilyn.keenan@bodc.tas.gov.au](mailto:marilyn.keenan@bodc.tas.gov.au) or collected from the Council office in St Helens.

Tenders are to be submitted by the closing date, clearly marked Tender for Cleaning of Council facilities, St Marys.

Tenders close **Friday 22 July 2011 at 3.00pm** and should be hand delivered, emailed to the above address or mailed to Break O'Day Council, PO Box 21, St Helens TAS 7216.

The Principal is not bound to accept the lowest or any tender.

**Des Jennings**  
General Manager

St Marys Police Phone Number **6372 1010**  
Non Urgent Number **131 444**  
Urgent and Life threatening **000**  
SES (Flood & storm only) **132 500**  
Fire **000**



## Computer Trouble?

- 15 years experience
- Home & business
- Hardware & software
- Websites & email
- Windows, Mac, Linux
- ADSL, WiFi, Satellite

**Call Ray on (03) 63 722 722**

**While creating husbands, God promised women that good and ideal husbands would be found in all corners of the world. And then He made the earth round.**

**St Marys**  
**PHARMACY**  
Ph: 6372 2844



**"I SAVED  
MONEY WITH  
DESIGNER  
BRANDS!"**



**Kodak quality  
prints in seconds**



St Marys Pharmacy is now stocking  
**Designer Brand**  
make-up.

Call in and get your **Loyalty Card**, which entitles you to buy 6 products, get your card stamped and get the **7th product FREE.**

Purchase 3 products at the same time and receive a **FREE Pen.**

Purchase 2 products at the same time and receive a **FREE Lipgloss.**

You also get a **FREE Mascara** when you purchase a foundation.

**Prices start at a low \$4.99.**



# Break O'Day Regional Arts 2011 Winter Art Competition

Theme : *"Winter Dreaming"*

Judges :

Maggie Fletcher . Dip. Arts and Craft Design,  
Cert IV Arts Admin

Sarah Schmerl . Councillor Break O'Day Municipality

Colin Smith . President Break O'Day Regional Arts



Closing date has been extended to 5 p.m. 1st August  
All works with entry fee to be delivered to  
Manna Farm

Winner of \$1,000 prize money will be announced at  
Bush Dance @ 8 p.m. 6th August Community Hall  
Entries will then be displayed at the e.ScApe Cafe  
Entry forms can still be obtained from Post Office  
and Purple Possum or Phone Colin 63722707

IMAGE: "Bubbles" Courtesy of

*Maggie Fletcher*

## Out of the Woodwork Wendy Brennan, Secretary 0408656014

The Woodcraft Guild's committee brought to my attention that in the last Out of the Woodwork article I had given the wrong Saturday for the Break O'Day Regional Arts market, and they have asked me to apologise for any inconvenience. I inadvertently got my Saturday's mixed up. **Their great market is on the First Saturday of Every Month** where you will find our Sizzler King selling our most hated, most eaten sausages.

As the Guild is sometimes approached about doing renovation and building works we would like to clarify that as hobbyist's we don't do onsite repair work. The Guild does not have any problem with doing small repair work for the elderly, infirmed or the low socio - economic members of our community from the confines of our workshop. However, large structural work we leave to the experts who have the proficiency in this area and rely on this type of labour as a source for their livelihood.

The Guild was sent this delightful picture of Oliver Ebdon on his second birthday as testament to the enjoyment that can be had from one of the Guild's wooden horses. (Thank you to Jan Clement who made several for her own children and freely gave us her pattern for the next generation to enjoy)

**A gentle reminder that subscriptions are now up for renewal.**

**The Guild would like to extend a warm welcome to whoever is successful in leasing the Old Railway Station, and hopes that the camaraderie which has been built up from previous occupiers will continue.**

The Guild meets on the last Saturday of every month at 2pm in the old railway goods shed St Marys. New members always welcome. We are open Monday Wednesday and Friday. Other times by appointment.

**A supportive environment where traditional woodcraft skills are taught**



*Pic of Oliver Ebdon,,,,,  
an upcoming equestrian rider.*



## **Councillors Corner**

**By Cllr Reon Johns.**

**Like to raise an issue? Feel free to contact me on mobile 0429 722 091 or Fax 6372 2098**

The Council is required to update strategic plans on a regular base.

In October 2010 the Council held eight public meetings throughout the Break O'Day. These meetings were open to the general public, community groups and business. If a member of the public was not able to attend then they could submit a written submission which was posted to all residents. All this was duly advertised.

Meetings were also held with:-

- Developers groups
- Chamber of Commerce
- Break O'Day Health Resources Assoc
- North East Bio Regional Network
- Break O'Day Youth council
- Councillors
- Council staff

The meetings were to capture the communities' ideas and direction that they would like to have the strategic plan take.

There were 321 written submissions and 875 comments.

All these comments and ideas were collated and from these the elected members came up with a strategic plan.

Focal points in St Marys was the establishment of a walking, cycling and riding track from St Marys Railway Station to Fingal. Promote and encourage arts, culture and heritage opportunities within our community and develop and implement initiatives for appropriate tourism in the region.

I moved a motion for the purchase of the St Marys Railway Station and that Council set aside an area within Railway Park for the Cranks and Tinkerers museum based on these communities comments. As I believe that the Council should invest in the future of this community by preserving our historic culture.

The development of a business plan is a step in the right direction. A business plan is a formal statement of a set of [business](#) goals, the reasons why they are believed attainable, and the plan for reaching those goals. It may also contain background information in order to preserve any cultural, historic artifacts or customs and look to provide a greater good to the community.

**The comments and views in this column are expressed as my personal opinion**



Rachael's last customer Sally Spilsbury.

We wish you all the best with your new endeavours.

From your St Marys Customers.



### **BREAK O' DAY STITCHERS**

Back to 'normal' - after a successful Easter Quilt & Craft Show we are now working on the quilt for next year's raffle besides doing the usual quilts, cushions and chair-backs for Medea Park nursing home and others.

The flyers will be going out soon to promote our annual Friendship Day on Friday 7<sup>th</sup> October at which we will be having a demonstration; a speaker; a challenge A3 sized item with the theme "Looking through the window"; and the usual craft item to make on the day -early booking for this event is recommended - Enquiries for further details can be made to: - Ann - [mluttrell1@bigpond.com](mailto:mluttrell1@bigpond.com) or Agnes -- 6376 1498.



Photo of: George Merickel, aka 'Surfside George' at North Shelley Point.

Photo courtesy Dale Matheson, Scamander Beach Surf Shop.

**The Irish have solved their own fuel problems. They are importing 50 million tonnes of sand from the Arabs and they're going to drill for their own oil.**

**Two Irishmen find a mirror in the road. The first one picks it up and says, "Blow me, I know this face, but I can't put a name to it." The second picks it up looks in it & says, "You daft b=z#\* ... it's me!"**

# Winter Dreaming Bush Dance

Saturday 6<sup>th</sup> August  
featuring bush band

## Rough Bark



It will be a night of  
great food, great music and great dancing  
in the St Marys Hall

Doors open 6pm for dinner, music starts at 7pm

Winter Dreaming Art Competition winners announced 8pm

Soups, curries and supper will be available.

Bar featuring our famous mulled wine, beer, wine (proof of age required) Plus tea/coffee/cold drinks, etc

**SEE YOU THERE!!**

Tickets for the dance - family - \$20 (BO'DRA members \$15)

Single - \$10 (BO'DRA members \$8)

We need volunteers to help make this event happen-if you can help in any way, please contact Kelly on 0427 713 195 or [kelrod@lizzy.com.au](mailto:kelrod@lizzy.com.au)

*brought to you by*



## ST MARYS NEWSAGENCY

Phone: 6372 2143



Open 7 days a week for your convenience.  
6am - 7pm Mon. to Fri. 7am - 6pm Sat. & Sun.

CALOWS BUS DEPOT      AURORA PAYG

PRE-PAID MOBILES      -      PHONE CARDS

DVDs      -      FISHING GEAR      -      ICE

### CALOWS DEPOT - BUS TIMES

EARLY BUS SCHOOL DAYS

6.55AM MON - FRI.

NORMAL BUS

9.10AM, MON - FRI - SAT 8.40AM.

WE SELL ALL PHONE CREDITS, INCLUDING  
INTERNATIONAL CALLING CARDS  
& I - TUNES.

VIDEOS STILL **CHEAP!!**



**JULY 2011**

All sessions are held  
from 10.30 - 12.30

All Building Blocks sessions  
are free of charge  
for children, parents,  
grand parents and carers of  
0-5 years old year olds.  
Come along and see!

### Play & Learn sessions

#### 6th Fingal -

Neighbourhood House in the large room

#### 12th St Marys -

Community Hall

#### 14th Cornwall -

Community Hall

#### 20th Fingal -

Neighbourhood House in the large room

#### 26th St Marys -

Community Hall

#### 27th Bicheno-

Community Hall the small room

#### Bicheno Community Hall -

we are holding an infant session, older children  
welcome, come along have a cuppa and meet  
other new parents, grandparents and carers.

## St Helens Flowers

Donna of St Helens Flowers takes all the  
fuss out of ordering flowers.

*Arrangements, Bouquets, Gift  
Baskets, Wedding Flowers,  
Floral Tributes*

Member of the Petals network—we can  
now send or receive flowers worldwide!

*Fantastic Fresh Flowers delivered to your  
door or statewide*

Ph Donna—6376 1211



Fun Range of Helium Balloons!



## Dick Adams MP

Federal Member for Lyons

Please contact one of my offices if I can be of any assistance

53B Main Road	58A High Street
PO Box 50	PO Box 271
Perth, Tas 7300	New Norfolk Tas 7140
Ph 6398 1115	Ph 6261 3366

Toll free 1300 132 689

Email D.Adams.MP@aph.gov.au



**WORKING WITH YOU FOR A  
STRONG COMMUNITY**

Written and Authorised by Dick Adams, 53B Main Road Perth

## Ransley's Appliance Service

P O Box 136

Scamander Tas 7215

- ° Washing machine NOISY?
- ° Refrigerator runs too LONG?
- ° Clothes dryer blows cold AIR?

Then you need the service  
of our technicians.

Ring us on: Scamander: 6372 5307







# Tasmania Valleys of Adventure

AVOCA • ROYAL GEORGE • ROSSARDEN • FINGAL • MANGANA • MATHINNA • UPPER ESK • CORNWALL • ST MARYS

## GREATER ESK TOURISM

### Promote your business or tourist venture on the [www.valleysofadventure.com](http://www.valleysofadventure.com) website

GET members are invited to submit a short blurb promoting their tourist venture or business plus a promotional photograph to [louisa.rhodes@ecpc.com.au](mailto:louisa.rhodes@ecpc.com.au) so GET can present you to the world. There may also be an opportunity to participate in the Northern Midland Business Association's new Tourist iPhone App currently in the planning stages. The news will be spread by Greater Esk Tourism—exciting plans are afoot. Our region has so much to offer—come along to any of our meetings and join in the enthusiasm. It is time to rev up the action promoting this region so that all our businesses can benefit. Times are hard for many so let's work together to support each other and make this happen.

**Next meeting:** Monday 11th July, 7pm at the Fingal Neighbourhood House.

**Guest Speakers:** Luke Martin - Tourism Industry Council Tasmania & Liz Schibig-Edgar - Tourism Tas.

**Cocktail Evening** to celebrate the winners of the **Photographic Competition**

### INVITATION

Date: Friday 5th August 2011  
Venue: Purple Possum St Marys  
Time: 5:30 for 6pm  
Cost: \$10 each

**All welcome**

Also, watch out for the Winter Dreaming Bush Dance at St Marys

August 1st is the closing date for the Winter Dreaming Art Competition - Contact: Colin [mannafarms@bigpond.com](mailto:mannafarms@bigpond.com).

### MANGANA MISSION MUSICIAN JAM NIGHTS

63 Elizabeth Street  
Mangana  
Ph: 63742212

July 10, Aug 12, Sept 9  
Oct 14, Nov 11, Dec 9

**From 6pm, BYO meat for BBQ**

[Mangana\\_mission@hotmail.com](mailto:Mangana_mission@hotmail.com)

### You wish to escape? Trout fishing your passion? ST PAUL'S RIVER CABINS

1207 Royal George Road, AVOCA  
Ph/Fax 6384 2211



[dennis@stpaulsrivercabins.com](mailto:dennis@stpaulsrivercabins.com)

### The Valley & East Coast Voice Guidelines.

- Opinions in any letters published are not necessarily the views held by the editor and voluntary workers.
- Our pages will remain open to fair and honest criticism, so that on all questions, both sides may be presented, but any letters containing personal attacks or hinting at libel or slander will not be accepted. Stick to the issue rather than making personal attacks.
- Please do not attack the editor, the paper or the authors of previous letters.
- Letter writers will be given the chance to respond over a suitable period of time, but anonymous and/or nom-de-plume letters received as from 11-02-10 will not be published. Subjects may be closed at the editor's discretion.
- Please make sure of your facts. Do not write letters just to let off steam. Letters most commonly published are those that have bearing to current community issues.
- Keep letters short, simple and to the point. Letters are restricted to 300 words or less.
- The Editor reserves the right to edit your letter for grammar, spelling or reduction in size where necessary.
- All letters arriving by post must be signed, including a printed name and also contain your contact details, such as full name, address and phone number.
- All letters sent by email must contain your contact details, such as full name, address and phone number.
- All letters left at drop-off points must have a signature, plus a printed name and also contain your contact details, such as full name, address and phone number.
- Do not be discouraged if your letters don't get published. Whilst each submission is reviewed on its own merits, we generally receive more letters than we have space available.
- The Valley & East Coast Voice reserves the right at all times, without notice, to update, change or amend our guidelines. Whilst we value & welcome community letters, The Valley & East Coast Voice does not provide specific feedback regarding any decision made not to publish a submission.



**St. Helens Electrical**

**ROD SHAW**  
**LIC: C00489**

**Domestic, Commercial, Industrial:**

*Wiring and Repairs, Rewires,  
Underground.*

**Home Heating:**

*Advisory, Sales & Installation of heat  
pumps and fixed heaters.*

**Lighting Specialist :**

*Interior and exterior, Advise,  
Sales and Installation.*

Ph: 6372-5522 Mbl: 0407-615-072  
2 Lagoon Esplanade, Scamander 7215

Big Shed has a new **guitar teacher** with 3 years teaching experience. Book now for your weekly lesson. All abilities welcome.

**Weds 4.30-6** New time with John McColl  
**Garden sculptures** - John will assist you with your individual project. High school students welcome. No Experience needed. \$20 Concessions Available.

1st **Wed** of every month 5-6.30  
**Life Drawing** (Model and materials provided. No tuition) \$12 No bookings required

Local artist Zeb Walker is currently on site creating his amazing yurts

Big Shed has a recording studio, PA hire and experienced engineers.

Big Shed has art space for hire, as well as a network of artists available for commissioned artworks,

24837 Tasman Highway, St Helens.  
Phone **0428725228**  
**Bigshedstudios@yahoo.com**

**BIG SHED STUDIOS**

**CALTEX ST MARYS**  
**MECHANICAL REPAIRS & SERVICE**

**PH: 6372 2335**

**41 Main St. St Marys Tas 7215**

**Fax: 6372 2822 Mob: 0419 503 109**

**HARRIS FUNERALS**

**Lindsay & Diane**

(D. Bailey & son) A.F.D.A

**Ph/Fax: 6376 1153 Mob: 0418 133 420**

**Office& Residence:**

114 Cecilia St  
St Helens

**Chapel:**

46 Tully Street  
St Helens

**We are here when you need us  
to arrange Burial or Cremation.**



# SPLASH

## ST MARYS

*You swill it, we fill it!*  
*You dump it, we pump it!*

Water cartage  
 Septic pumping

Contact: Mick  
**0488 777713**



## Tim Morris MP

Tasmanian Greens Member for Lyons



**THE GREENS**  
*Tasmania*

*I say NO to selling off  
 our School Farms and  
 Research Stations*

**New Address:** Shop 9, Covehill Shopping  
 Centre, Bridgewater 7030  
**Phone:** (03) 6263 3801  
**E-mail:** greens@parliament.tas.gov.au

**www.tas.greens.org.au**

Authorised by Tim Morris MP, Parliament House, Hobart 7000.

# C & D

## EXCAVATIONS

FOR ALL YOUR EARTHMOVING REQUIREMENTS

Phone : 03 6372 2033  
 Mobile : 0439 722 032



**LOCAL OWNER - OPERATOR**  
**OVER 20 YEARS EXPERIENCE**

**Ph : Dana or Craig**

**6372 2033 /0439 722 032**

## Incorporating all your needs in:

DAMS, ROADING, FIREBREAKS, LAND CLEARING, HOUSE SITES, DRAINAGE, BRIDGE CONSTRUCTION.

- ◆ ROAD GRAVELS
- ◆ TOP SOIL
- ◆ SCREENED TOP SOIL
- ◆ SAND
- ◆ ROCKS
- ◆ ON SITE SCREENER 20mm to 75mm (TURN YOUR RUBBISH INTO TOP SOIL)
- ◆ 20 TONNE EXCAVATORS WITH TILT BUCKET & RIPPER, ROCK & LOG GRAB & QUICK HITCH
- ◆ D 65 KOMATSU DOZER, RIPPER & TILT BLADE
- ◆ 10 YARD TIPPER
- ◆ COMPACTION ROLLER
- ◆ WHEEL LOADER

**AND MUCH MORE**



## Scamander Beach Surf Shop

6 Lagoon Esplanade  
Scamander

Ph: 6372 5529

Scamandersurf.com

Bathers Wetsuits DVDs  
Clothing Footwear  
Bodyboards  
Watches Jewellery

### Surfboards:

Milch McTavish  
Surftech Bic G Boards

## Bay Surf Shop

2 Pendrigh Place  
St Helens

Ph: 6376 1755

## BOBCAT HIRE



- \* Site cleaning & leveling
- \* Excavations
- \* Post hole digging
- \* Landscape preparation

SAVE HOURS OF HARD WORK.  
GIVE MARK A CALL  
Ph: 6372 2145.

## Rae & Partners

Lawyers Barristers & Solicitors  
113 Cimitiere St Launceston

### Visiting :

St Marys Community Health Centre  
Alternate Tuesdays : 9 am – 10 am

Ph: 6337 5555 For appointments.

Remedial Massage and Naturopathy  
ring Sue Christiansen for an appointment.  
0418 515 419

## ANA'S HAIRDRESSING SALON

OPENING ON  
JULY 12, 2011.



BEHIND PURPLE POSSUM  
STORY STREET, ST MARYS.

EVERY TUESDAY - 9AM — 3PM

BRINGING 22 YEARS EXPERIENCE

MASTER'S QUALIFICATION  
QUALIFIED TRAINER & ASSESSOR  
REG.SPECIALIST, VET TEACHER.  
PROVIDING CUTS, COLOURS, PERMS S/SETS.

PHONE: 0448 532 531 ON TUESDAYS,  
OR JUST CALL IN.

OR PHONE 6372 5497 TO PRE-BOOK.

LOOKING FORWARD TO PROVIDING  
A SERVICE TO THE COMMUNITY.

## ETHICAL SUPER

Time to make the change?

Speak to the ethical investing specialists



Tas Ethical  
6234 6336

[www.tasethical.com.au](http://www.tasethical.com.au)

Tas Ethical Pty Ltd is an Authorised Representative of  
Financial Wisdom Ltd ABN 70 006 646 108 AFSL 231138

Articles for any edition may be left at the St Marys  
Pharmacy. This also includes items for sale and want-  
ed. Please ensure that your details are included.

Due to de-mineralized soils and over consumption  
of processed food it is has been estimated 80% plus of  
Australians are deficient in

## MAGNIFICENT MAGNESIUM

Yet this mighty mineral is essential for  
hundreds of chemical reactions in the body.  
Magnesium can help those who suffer with:

- |                     |                |
|---------------------|----------------|
| .chronic fatigue    | .heart disease |
| .arthritis          | .high b/p      |
| .depression         | .migraines     |
| .diabetes           | .muscle cramps |
| .stress and anxiety | .poor sleep    |
| .poor circulation   | .fibromyalgia  |

And the list goes on

Nutri-tech solutions offers

## Mag-Sorb

Superior transdermal magnesium supplement

Call Frank, agent for NTS, on 0419 372 192.





Mon	Tue	Wed	Thu	Fri
			<b>14 Jul</b> ☞ Launching into Learning St Marys Kinder 10.30am ☞ Stepping Stones - Marys Kinder - 1pm ☞ St Marys Soccer Club ☞ 9/10 Science and Engineering Challenge - L'ton ☞ Country Gold Training	<b>15 Jul</b> <b>STUDENT FREE DAY</b>
<b>18 Jul</b> ☞ Active After School Activities gr 4-8	<b>19 Jul</b> ☞ Neuro Science Competition - Hobart	<b>20 Jul</b> ☞ Active After School Activities gr Prep-3 ☞ Secondary Winter Sports	<b>21 Jul</b> ☞ Launching into Learning St Marys Kinder 10.30am ☞ Stepping Stones - Marys Kinder - 1pm ☞ St Marys Soccer Club ☞ Country Gold Training	<b>22 Jul</b> ☞ Launching into Learning 0-4yrs program - Fingal Kindergarten - 10am start
<b>25 Jul</b> ☞ Active After School Activities gr 4-8 ☞ Grade 10 W/Experience	<b>26 Jul</b> ☞ Grade 10 W/Experience ☞ Grade 9 Camp ☞ Grade 5/6 Field Trip - Scamander	<b>27 Jul</b> ☞ Active After School Activities gr Prep-3 ☞ Grade 10 W/Experience ☞ Grade 9 Camp	<b>28 Jul</b> ☞ Launching into Learning St Marys Kinder 10.30am ☞ Stepping Stones - Marys Kinder - 1pm ☞ St Marys Soccer Club ☞ Grade 10 W/Experience ☞ Grade 9 Camp ☞ Country Gold Training	<b>29 Jul</b> ☞ Launching into Learning 0-4yrs program - Fingal Kindergarten - 10am start ☞ Grade 10 W/Experience ☞ Grade 9 Camp

Above calendar is correct at time of printing. For regular updates and other information please go to the school website:-

[www.schools.education.tas.gov.au/stmarys](http://www.schools.education.tas.gov.au/stmarys)

## NEW Bus Parking Initiative

We have began a new bus parking initiative at the St Marys Campus. In consultation with the School Association and DIER the following scheme has been implemented.

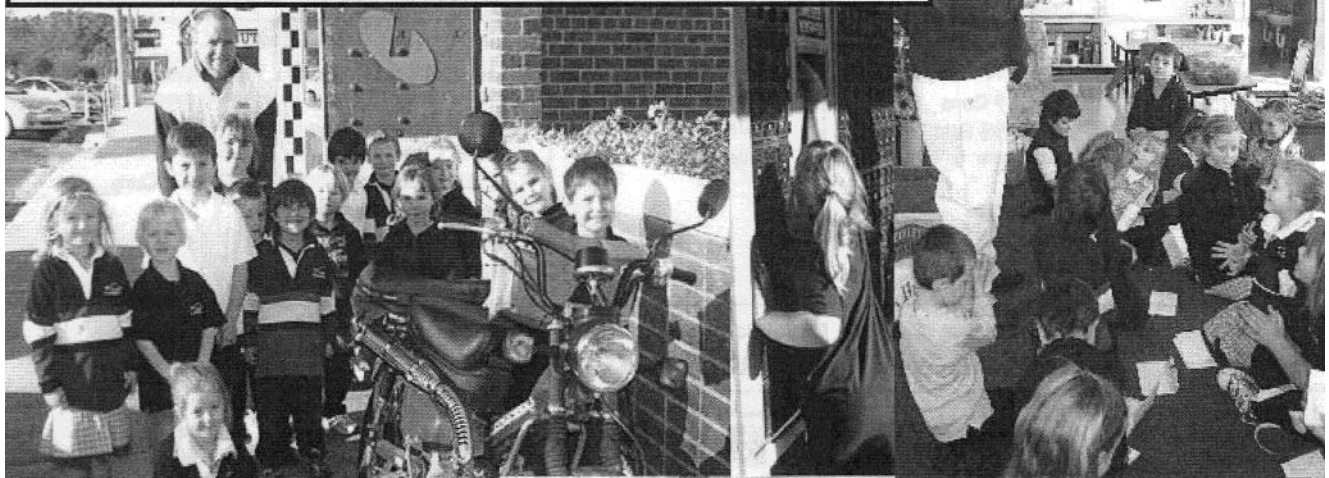
- ☞ All school buses will now park in the courtyard area, morning and afternoon, to enable students to embark and board;
- ☞ The buses will line up in the same order each day to ensure students can easily locate their bus;
- ☞ At 3:00pm students will line up under cover and bus monitors will complete an attendance check;
- ☞ By lining up under cover we will minimise the possibility of students getting wet;
- ☞ The buses have total right of way, both morning and afternoon;
- ☞ Parents will not be permitted to enter the courtyard area by vehicle and staff may not enter during times of bus movement 8:30 – 8:45am and 2:50 – 3:05pm;
- ☞ Parents will now have unrestricted access to the front turning circle to drop off and collect children;
- ☞ Students travelling with parents must move via the designated safe route outside the Science block;
- ☞ There is to be no parking of vehicles outside the front door of the school in the unmarked areas near the steps. This is a real safety issue.

All the above changes have been implemented to maximise the safety, comfort and well-being of students. The same procedure will be used if the school is closed during the day due to flooding.

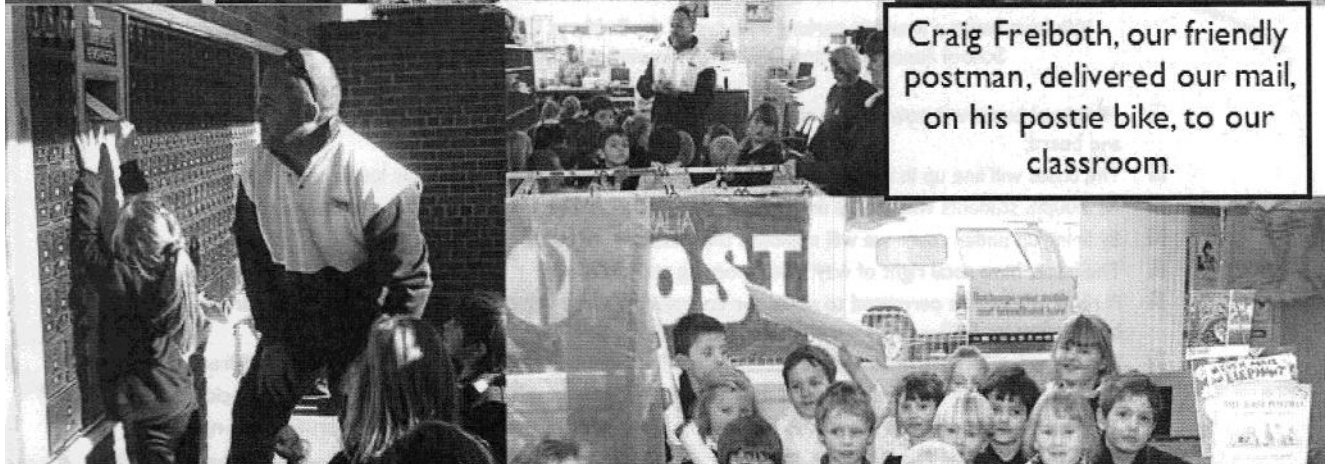
We thank you in anticipation of your support.



The Kinders have a Post Office set up in their classroom. We wrote letters which we posted at our local Australia Post. We toured the post office and found out all about how the Post Office works - some people even found their family's post box.



Craig Freiboth, our friendly postman, delivered our mail, on his postie bike, to our classroom.



A big thank you to Craig Freiboth, and Ruth McGiverson at the St. Marys Post Office, and the St. Helens Post Office staff for all their contributions to our learning. We have had great fun!



# ST MARYS COMMUNITY HEALTH CENTRE

## DOCTORS ROSTER

Dr Cyril Latt- 14/7/11-29/7/11  
Dr L. Reeckman- Women's Health Clinic 21 June

### St Marys Community Health Centre

#### GP Surgery Hours:

Monday—Friday 8:50am-12:30pm  
12:30pm-1:30pm LUNCH  
1:30pm-4:30pm

#### PATHOLOGY SERVICE

No Pathology Service between  
12:00-1:30pm or before 8:30am daily.

If you require Pathology **before 8:30am** an appointment **must** be made with the Nurses Station **the day/night before**.

#### INR TESTS

A doctor's appointment is required if you are having an INR test. Please **let reception staff know when making your appointment that you are having an INR test**. This is a 5 minute doctor consult.

#### AFTER HOURS SERVICE CONTACT NUMBERS

PLEASE PHONE GP ASSIST ON 1300 780 011  
AMBULANCE 1800 008 008 or  
EMERGENCY 000  
COMMUNITY HEALTH CENTRE 6372 2111  
**PLEASE RING BEFORE PRESENTING AFTER HOURS**

#### SCRIPTS AND DOCTORS APPOINTMENTS

Please ensure doctors appointments are booked **prior** to your medication/s running out or **in advance** if you are attending this practice regularly.

Scripts **can not be requested by patients over the phone** and are unable to be done over the weekends, ensure you have enough medications in advance.  
**PLEASE BE PATIENT** waiting periods can apply.

#### RSPCA CUPCAKE DAY



The St Marys Health Centre is running a colouring competition for the RSPCA Cupcake Day August 15.

Entry is **FREE** and blank pictures are available from the reception area (or the back of this page). Finished pictures can be left in the box at the Health Centre's Reception.

The winning picture drawn will win a colouring book and pencil set- drawn Wednesday 17 August 2011.

Cupcakes will be available for sale from the reception area on Tuesday 16 August 2011 for \$2.00 each.

#### LAUREL HOUSE COUNSELLING

PHONE 6334 2740 / A.H. & WEEKENDS 0409 800 394

Support for women, men and children who have experienced rape, sexual assault/ harassment or child abuse. Local appointments available.

#### 'NATIONAL WEE WEEK' is 18th- 24th July 2011

Check out the Health Display Board at the Centre for details

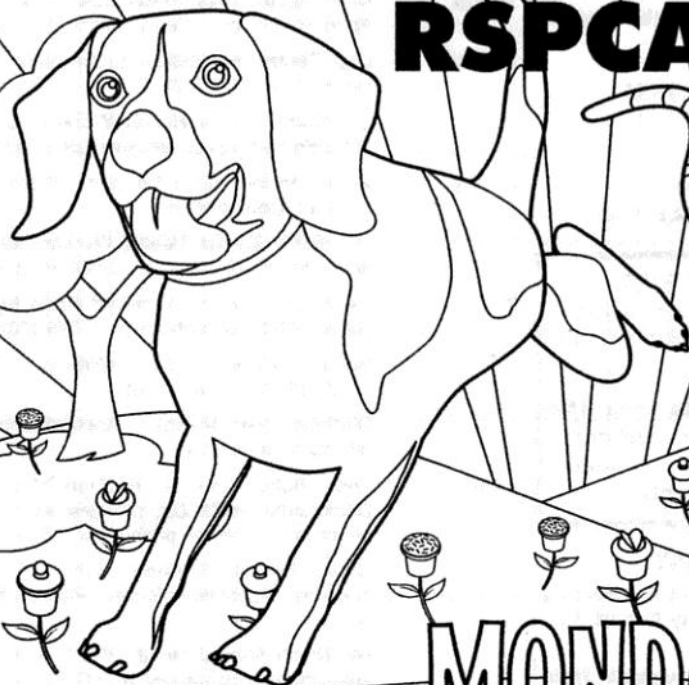
## WHAT'S ON AT THE CENTRE

- 14 July **Relationships Australia-** Leanne McMurtie for appointments please phone 1300 364 277  
**Social Work-** Shan Williams. Please phone 6372 2111 for appointments  
**GP Podiatrist-** Annabel. Please see your GP for a referral.
- 15 July **Social Worker-** Shan Williams appointments available by phoning 6372 2111.  
**TABIS (Tasmanian Acquired Brain Injury Service)-** Hannah Rubenach phone 0437 076 100  
**Diabetes Educator (GP North) -** Appointments available by referral from your GP  
**Dietician (GP North) -** Appointments available by referral from your GP  
**Exercise Physiologist (GP North) -** Appointments available by referral from your GP
- 18 July **TLC Meeting (Tasmanian Lymphoedema Centre)** 10:00am in the Day Room
- 19 July **Child Health Session** with Sue Gofton every Tuesday- Appointments only. Please phone 0428 136 381
- 20 July **Day Centre-** For details on the group please contact Hayley Gilbert 6372 2111.  
**GP North Mental Health Worker-** Brady Young for appointments please see your GP for a referral
- 21 July **Social Work-** Shan Williams. Please phone 6372 2111 for appointments.  
**GP North Mental Health Worker-** Brady Young for appointments please see your GP for a referral
- 22 July **TABIS (Tasmanian Acquired Brain Injury Service)-** Hannah Rubenach phone 0437 076 100  
**Social Work-** Shan Williams. Please phone 6372 2111 for appointments  
**Dietician (GP North) -** Appointments available by referral from your GP
- 26 July **Tom Bain, Rae & Partners Lawyers.** At the Community Health Centre Tuesday fortnights. For appointments please phone 6337 5555  
**Child Health Session** with Sue Gofton every Tuesday- Appointments only. Please phone 0428 136 381  
**GP North Mental Health Worker-** Brady Young for appointments please see your GP for a referral
- 27 July **Day Centre-** For details on the group please contact Hayley Gilbert 6372 2111.  
**Social Work-** Shan Williams. Please phone 6372 2111 for appointments.  
**GP North Mental Health Worker-** Brady Young for appointments please see your GP for a referral
- 28 July **Relationships Australia-** Leanne McMurtie for appointments please phone 1300 364 277  
**Social Worker-** Shan Williams appointments available by phoning 6372 2111  
**Continence Nurse-** Sue Walker. For appointment please see your GP or Health Professional for a referral.
- 29 July **TABIS (Tasmanian Acquired Brain Injury Service)-** Hannah Rubenach phone 0437 076 100  
**Social Worker-** Shan Williams appointments available by phoning 6372 2111



# CUP CAKEDAY

for the  
**RSPCA** 



MONDAY  
**15 August 2011**

[www.rspcacupcakeday.com.au](http://www.rspcacupcakeday.com.au)

Name

School

Contact number





## MEALS ON WHEELS ROSTER

July		St Marys	Fingal
Monday	18th	Pam Lynch	Neighbourhood House
Tuesday	19th	Ruth Aulich	
Wednesday	20th	Liz Rice	
Thursday	21st	Yvonne Salter	
Friday	22nd	Patricia Barr	
<b>MOW Contact</b>		<b>Phone:</b>	<b>0488 384 344</b>
Monday	25th	Lundy Vosper	Neighbourhood House
Tuesday	26th	Pam Bretz	
Wednesday	27th	Lorraine Gill	
Thursday	28th	D & V Rice	
Friday	29th	Patricia Barr	Neighbourhood House

## Church Services

### Catholic Parish of St Marys

Sr. Lorraine Groves  
Parish House. Ph: 6372 2252  
Mob: 0409 172 741

### 1st Sunday: MASS

St Helens Vigil L/W 6.00pm  
Bicheno L/W 9.00am  
Fingal 11.30am

### 2nd Sunday: LITURGY

St Helens Vigil LWC 6.00pm  
St Marys LWC 9.00am  
Bicheno LWC 9.00am  
Fingal LWC 9.30am

### 3rd Sunday: MASS

St Helens Vigil 6.00pm  
St Marys 9.00am  
Fingal 9.30am  
Bicheno 9.00am

### 4th Sunday LITURGY

St Helens Vigil 6.00pm  
St Marys 9.00am  
Bicheno 9.00am  
Fingal 9.30am

### 5th Sunday LITURGY

St Helens Vigil 6.00pm  
St Marys 9.00am  
Bicheno 9.00am  
Fingal 9.30am

Enq: Baptisms & Weddings  
Ph: 63 31 4377  
Church of Apostles  
Presbytery  
Officer Hours: 10.00am - 3pm.  
Sr Marjorie Ph: 6381 1122.

### Anglican Parish of Northern Midlands

Avoca: 11am 2nd/4th Sundays  
Fingal: 3 pm 1st/3rd Sundays  
Mathinna: 3pm 2nd/ 4th Sundays  
Ross: 11am 1st/3rd Sundays  
Campbell Town: 9am every Sun.  
(3rd Sunday -Family Service)

### Anglican Parish of Break O'Day

Ph: 6376 1144

St Helens Every Sunday  
8 am and 10.30 am  
St Marys Every Sunday  
10am  
Pyengana: Kids Church,  
2pm - 4th Sunday every month.

### Salvation Army TUESDAY JAM

3-5pm every Tuesday.  
excepting school holidays.  
Envoy Melanie Norton Ph: 63722099

### Break O'Day Uniting Church

The Manse St Helens  
Ph: 6376 2405

St Helens 9.00 am  
Fingal 11.15 am

### Seventh Day Adventist

Hodgeman Street Scamander  
Sabbath School 10 am  
Divine Service 11 am

## Contacts for Valley Voice

PH: Judy: 6372 2155

email: [judith.spilsbury@telair.com.au](mailto:judith.spilsbury@telair.com.au)

Accounts: Mary: 6372 2328

Please leave written material at the  
St Marys Pharmacy,  
Main St, St Marys,  
or post: C/- Post Office, St Marys Tas 7215

### **Advertising: 2011**

Classifieds: **25 words or less: free**

Community notices : **free.**

Small boxed ads. Garage sales. Greetings.

Thanks etc. **\$12.**

¼ page **\$20.** ½ page **\$30.**

Full page **\$50.**

1 year posted subscription **\$40.**

## On Air Now!

**Vision FM 88.0 at**

**St. Marys, St Helens and Fingal.**

**Join Greg and Shelley on their program**

## 'The Journey'

100% positive music & talk all day long;  
connecting faith to life.

National Vision Radio Network.

Phone 1800 007 770.

web [www.vision.org.au](http://www.vision.org.au)

## **St Marys Online Access Centre** **Opening Hours:**

**Monday 10am -3pm**

**Tuesday 10 am-4pm**

**Wednesday 10am-4 pm**

**Thursday 10 am – 3 pm**

**Friday 10 am – 3 pm**

**Saturday 11 am – 2 pm**

**Ph: 6372 2005**

## **ST MARYS OP-SHOP**

**NEW WINTER TRADING HOURS:**

**11AM — 3PM MON TO FRI.**

**PH: Janet Drummond: 6372 2851.**

## **WANTED**

**Winter blankets, curtains of any  
kind & warm winter clothing.**

Thanks to those who volunteered for the new roster. If anyone is interested in going on a casual list to cover when regular volunteers have other commitments, please call in and see Janet at the shop on a Monday or a Thursday.

*Please note change of phone number  
whilst Tracy is convalescing.*

## St Marys Sports Centre Inc. news. Kackhander.

Short and sweet this time, and I do mean sweet. All good news...First of all the Christmas in July bookings are going great so if you haven't booked a table, please make sure you do so by this Friday/Saturday. Will be a fantastic feed and eagerly awaited.

Congratulations to Russell and Bobbie Harwood who won our first Pairs night in indoor bowls last week. We had a pretty good number to play. The following Friday evening it was good to announce that we had several interested younger players who began learning how to play, and handled themselves with aplomb. This Friday night it is a draw for partner night so please try to be there by around 6.30 pm. All very welcome. Just come along for the Sav's if nothing else. They taste great.

Black Rock Sunday Golf has commenced again. Thanks to Macca and the crew, a 9 hole event every Sunday is conducted at the club (weather permitting of course). Decided to start with 9 holes allowing older or even brand new golfers to play in winter conditions. Added benefits of course are later start / earlier finish. Hopefully this great initiative will lead to most wanting to play 18 holes (maybe even on Saturdays) again before long. It certainly deserves a big try.

Want to be a part of another great initiative designed to encourage and enhance the club's social side? You'd be more than welcome to be part of the brand new ENTERTAINMENT COMMITTEE. Macca would love to hear from you on this too. Already some exciting events being considered to try. Sounds great.

By the time this column is being read, the first meeting of the new Committee would have taken place so in the next issue we should have some news there to report.

Until next time, good hitting and rolling.



**ST MARYS SPORTS CENTRE INC.**  
**Every Friday – 6.30 - 7.30pm**  
**drinks at discounted prices**



**38 Main Street St Marys**  
**Phone/Fax 6372 2240 - Butcher Ph: 6372 2274**  
**Mon – Fri 8am – 6pm**  
**Sat 8am - 12 noon Sun - closed**

### ***This week's specials.***

*(available from Thurs 14th July - Wed 20th July)*

#### ***from the butchery***

Porterhouse steak	\$14.99kg
Lamb shanks	\$ 9.99kg
IGA chicken drumsticks	\$ 5.49kg
Lamb loin chops	\$14.99kg

#### ***something for breakfast***

Uncle Tobys Plus cereal 410/460g	\$3.99
IXL conserve jam/marmalade 600g	\$2.79
Up & Go breakfast drink 250ml 6pk	\$5.99
IGA Eggs 59g 1 dozen	\$2.99
Just Juice long life juice 2lt	\$2.79

#### ***grocery lines***

Campbells red/white cond. soup 410/420g	99c.
Golden Circle cordial syrup 2lt	\$2.99
SPC baked beans & spaghetti 415/425g	.99c
Bundaberg white/raw sugar 1kg	\$1.79
Lindt Excellence/ Lindor choc. block 100g	\$1.99

### ***Next week's specials***

*(available from Thurs 21st July - Wed 27th July)*

#### ***from the butchery***

Blade roast	\$ 9.99kg
Beef mince	\$ 8.99kg
Ingham microwave chickens	\$ 5.99kg
Round BBQ steak	\$ 9.99kg
Smocked hocks	\$ 7.99kg

#### ***from the freezer***

Scott's meat pies 900g 6pk	\$3.99
Kraft cheese slices singles 410/500g	\$3.99
Peters choc wedge vanilla bonus 12pk	\$4.99
Meadowlea margarine spread 1kg	\$3.69

#### ***grocery lines***

Safe toilet tissue 12pk	\$2.79
Thick & Thirsty paper towel 2pk	\$1.99
Purina Friskies dry cat food 1kg	\$3.49
Heinz tomato sauce squeeze 500ml	\$1.49
Nestle Milo 750g	\$6.55
Natural confectionery Co bags 140/200g	\$1.99

*We now have in stock*

***Enviro Care Earth products.***

***100% Australian owned, with NO phosphates, chlorine, animal testing or harsh fumes.***

*Laundry powder to pet shampoo.*

*Check out the new stand  
next time you are in store.*